

3

ROUNDING, BEVELLING, PROFILING



Rounding cutters

66



Quadrant moulding cutters

75



Combination Rounding -, Beveling- and Jointing cutters

77



Universal profile cutters

84



Universal cutterheads

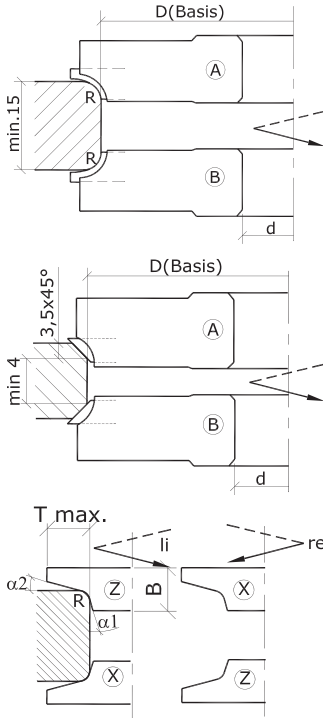
87



Round-off and bevel cutter R=2-6 and 45° with reversible knives

Application: For rounding or beveling in solid wood or panel materials • Spindle moulding machines

Design: Tungsten carbide reversible knives • Profiled on both sides, shear cut • Radius- and bevel knives useable in the same cutter body • For use with bevel knives, shims of 1mm thickness required • Tool body in steel • MAN (manual feed)



Bore 30

Art. Nr.	D	R	α	d	Z	Pos.	n	Index
104003	120	-	-	30	2	A	6'000-12'100	1
104070	120	2.0		30	2	A	6'000-12'100	2
104071	120	2.5		30	2	A	6'000-12'100	3
104072	120	3.0		30	2	A	6'000-12'100	4
104073	120	4.0		30	2	A	6'000-12'100	5
104074	120	5.0		30	2	A	6'000-12'100	6
104075	120	6.0		30	2	A	6'000-12'100	7
104076	120		45°	30	2	A	6'000-12'100	8
104004	120	-	-	30	2	B	6'000-12'100	9
104077	120	2.0		30	2	B	6'000-12'100	10
104078	120	2.5		30	2	B	6'000-12'100	11
104079	120	3.0		30	2	B	6'000-12'100	12
104080	120	4.0		30	2	B	6'000-12'100	13
104081	120	5.0		30	2	B	6'000-12'100	14
104082	120	6.0		30	2	B	6'000-12'100	15
104083	120		45°	30	2	B	6'000-12'100	16

Bore 40

Art. Nr.	D	R	α	d	Z	Pos.	n	Index
104026	120	-	-	40	2	A	6'000-12'100	17
104027	120	2.0		40	2	A	6'000-12'100	18
104028	120	2.5		40	2	A	6'000-12'100	19
104029	120	3.0		40	2	A	6'000-12'100	20
104030	120	4.0		40	2	A	6'000-12'100	21
104031	120	5.0		40	2	A	6'000-12'100	22
104032	120	6.0		40	2	A	6'000-12'100	23
104033	120		45°	40	2	A	6'000-12'100	24
104034	120	-	-	40	2	B	6'000-12'100	25
104035	120	2.0		40	2	B	6'000-12'100	26
104036	120	2.5		40	2	B	6'000-12'100	27
104037	120	3.0		40	2	B	6'000-12'100	28
104038	120	4.0		40	2	B	6'000-12'100	29
104039	120	5.0		40	2	B	6'000-12'100	30
104040	120	6.0		40	2	B	6'000-12'100	31
104041	120		45°	40	2	B	6'000-12'100	32

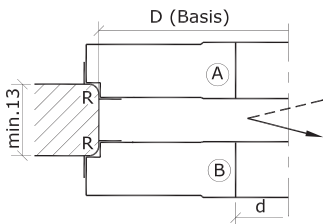
Bore 50

Art. Nr.	D	R	α	d	Z	Pos.	n	Index
104017	120	-	-	50	2	A	6'000-12'100	33
104100	120	2.0		50	2	A	6'000-12'100	34
104101	120	2.5		50	2	A	6'000-12'100	35
104102	120	3.0		50	2	A	6'000-12'100	36
104103	120	4.0		50	2	A	6'000-12'100	37
104104	120	5.0		50	2	A	6'000-12'100	38
104105	120	6.0		50	2	A	6'000-12'100	39
104106	120		45°	50	2	A	6'000-12'100	40
104018	120	-	-	50	2	B	6'000-12'100	41
104107	120	2.0		50	2	B	6'000-12'100	42
104108	120	2.5		50	2	B	6'000-12'100	43
104109	120	3.0		50	2	B	6'000-12'100	44

Art. Nr.	D	R	α	d	Z	Pos.	n	Index
104110	120	4.0		50	2	B	6'000-12'100	45
104111	120	5.0		50	2	B	6'000-12'100	46
104112	120	6.0		50	2	B	6'000-12'100	47
104113	120		45°	50	2	B	6'000-12'100	48

Spare parts

Art.Nr.		Index
216140	Reversible knives OERTLI, Format, R=2.5 Typ=Z ·1=15° ·2=15° T max=6.00 B=6.0 Qual=HW	1-8, 17-24, 33-40
216142	Reversible knives OERTLI, Format, R=2.5 Typ=X ·1=15° ·2=15° T max=6.00 B=6.0 Qual=HW	9-16, 25-32, 41-48
216579	Reversible knives OERTLI, Format, R=2.0 Typ=Z ·1=15° ·2=15° T max=6.00 B=6.0 Qual=HW	1-8, 17-24, 33-40
216580	Reversible knives OERTLI, Format, R=2.0 Typ=X ·1=15° ·2=15° T max=6.00 B=6.0 Qual=HW	9-16, 25-32, 41-48
216629	Reversible knives OERTLI, Format, ·=45° Typ=Z B=6 Qual=HW	1-8, 17-24, 33-40
216630	Reversible knives OERTLI, Format, ·=45° Typ=X B=6 Qual=HW	9-16, 25-32, 41-48
216637	Reversible knives OERTLI, Format, R=3.0 Typ=Z ·1=15° ·2=15° T max=6.00 B=6.0 Qual=HW	1-8, 17-24, 33-40
216638	Reversible knives OERTLI, Format, R=3.0 Typ=X ·1=15° ·2=15° T max=6.00 B=6.0 Qual=HW	9-16, 25-32, 41-48
216682	Reversible knives OERTLI, Format, R=4.0 Typ=Z ·1=15° ·2=15° T max=7.00 B=9.5 Qual=HW	1-8, 17-24, 33-40
216683	Reversible knives OERTLI, Format, R=5.0 Typ=Z ·1=15° ·2=15° T max=7.00 B=9.5 Qual=HW	1-8, 17-24, 33-40
216684	Reversible knives OERTLI, Format, R=6.0 Typ=Z ·1=15° ·2=15° T max=7.00 B=9.5 Qual=HW	1-8, 17-24, 33-40
216685	Reversible knives OERTLI, Format, R=4.0 Typ=X ·1=15° ·2=15° T max=7.00 B=9.5 Qual=HW	9-16, 25-32, 41-48
216686	Reversible knives OERTLI, Format, R=5.0 Typ=X ·1=15° ·2=15° T max=7.00 B=9.5 Qual=HW	9-16, 25-32, 41-48
216687	Reversible knives OERTLI, Format, R=6.0 Typ=X ·1=15° ·2=15° T max=7.00 B=9.5 Qual=HW	9-16, 25-32, 41-48
851075	Screws, M=4 D=6.5 L=12 Typ=Torx 20	1-48
851077	Screws, M=4 D=6.5 L=16 Typ=Torx 20	1-48
851295	Shims for four-corner knives, B=1.0	1-48



Round-off cutter R=2-6, 7-10 and R=11-15 with reversible knives

Application: For one- or double sided rounding in solid wood or panel materials • Spindle moulding machines

Design: Tungsten carbide reversible knives • Profiled on both sides, shear cut • Radii 2-6mm, 7-10mm and 11-15mm useable in the same cutter body • Tool body in steel • MAN (manual feed)

Bore 30

Art. Nr.	D	R	d	Z	Pos.	n	Index
112584	120	-	30	2	A	6'000-10'000	1
112692	120	2	30	2	A	6'000-10'000	2
112693	120	3	30	2	A	6'000-10'000	3
112680	120	4	30	2	A	6'000-10'000	4
112681	120	5	30	2	A	6'000-10'000	5
112682	120	6	30	2	A	6'000-10'000	6
112585	120	-	30	2	B	6'000-10'000	7
112694	120	2	30	2	B	6'000-10'000	8

Art. Nr.	D	R	d	Z	Pos.	n	Index
112695	120	3	30	2	B	6'000-10'000	9
112683	120	4	30	2	B	6'000-10'000	10
112684	120	5	30	2	B	6'000-10'000	11
112685	120	6	30	2	B	6'000-10'000	12
112588	120	-	30	2	A	6'000-10'000	13
112696	120	7	30	2	A	6'000-10'000	14
112686	120	8	30	2	A	6'000-10'000	15
112687	120	9	30	2	A	6'000-10'000	16
112688	120	10	30	2	A	6'000-10'000	17
112589	120	-	30	2	B	6'000-10'000	18
112697	120	7	30	2	B	6'000-10'000	19
112689	120	8	30	2	B	6'000-10'000	20
112690	120	9	30	2	B	6'000-10'000	21
112691	120	10	30	2	B	6'000-10'000	22
112720	120	-	30	2	A	6'000-10'000	23
112721	120	11	30	2	A	6'000-10'000	24
112722	120	12	30	2	A	6'000-10'000	25
112723	120	13	30	2	A	6'000-10'000	26
112724	120	14	30	2	A	6'000-10'000	27
112725	120	15	30	2	A	6'000-10'000	28
112726	120	-	30	2	B	6'000-10'000	29
112727	120	11	30	2	B	6'000-10'000	30
112728	120	12	30	2	B	6'000-10'000	31
112729	120	13	30	2	B	6'000-10'000	32
112730	120	14	30	2	B	6'000-10'000	33
112731	120	15	30	2	B	6'000-10'000	34

Bore 40

Art. Nr.	D	R	d	Z	Pos.	n	Index
112732	120	-	40	2	A	6'000-10'000	35
112733	120	2	40	2	A	6'000-10'000	36
112734	120	3	40	2	A	6'000-10'000	37
112735	120	4	40	2	A	6'000-10'000	38
112736	120	5	40	2	A	6'000-10'000	39
112737	120	6	40	2	A	6'000-10'000	40
112738	120	-	40	2	B	6'000-10'000	41
112739	120	2	40	2	B	6'000-10'000	42
112740	120	3	40	2	B	6'000-10'000	43
112741	120	4	40	2	B	6'000-10'000	44
112742	120	5	40	2	B	6'000-10'000	45
112743	120	6	40	2	B	6'000-10'000	46
112744	120	-	40	2	A	6'000-10'000	47
112745	120	7	40	2	A	6'000-10'000	48
112746	120	8	40	2	A	6'000-10'000	49
112747	120	9	40	2	A	6'000-10'000	50
112748	120	10	40	2	A	6'000-10'000	51
112749	120	-	40	2	B	6'000-10'000	52
112750	120	7	40	2	B	6'000-10'000	53
112751	120	8	40	2	B	6'000-10'000	54
112752	120	9	40	2	B	6'000-10'000	55
112753	120	10	40	2	B	6'000-10'000	56
112754	120	-	40	2	A	6'000-10'000	57
112755	120	11	40	2	A	6'000-10'000	58
112756	120	12	40	2	A	6'000-10'000	59
112757	120	13	40	2	A	6'000-10'000	60
112758	120	14	40	2	A	6'000-10'000	61
112759	120	15	40	2	A	6'000-10'000	62
112760	120	-	40	2	B	6'000-10'000	63
112761	120	11	40	2	B	6'000-10'000	64

Art. Nr.	D	R	d	Z	Pos.	n	Index
112762	120	12	40	2	B	6'000-10'000	65
112763	120	13	40	2	B	6'000-10'000	66
112764	120	14	40	2	B	6'000-10'000	67
112765	120	15	40	2	B	6'000-10'000	68

Bore 50

Art. Nr.	D	R	d	Z	Pos.	n	Index
112766	120	-	50	2	A	6'000-10'000	69
112767	120	2	50	2	A	6'000-10'000	70
112768	120	3	50	2	A	6'000-10'000	71
112769	120	4	50	2	A	6'000-10'000	72
112770	120	5	50	2	A	6'000-10'000	73
112771	120	6	50	2	A	6'000-10'000	74
112772	120	-	50	2	B	6'000-10'000	75
112773	120	2	50	2	B	6'000-10'000	76
112774	120	3	50	2	B	6'000-10'000	77
112775	120	4	50	2	B	6'000-10'000	78
112776	120	5	50	2	B	6'000-10'000	79
112777	120	6	50	2	B	6'000-10'000	80
112778	120	-	50	2	A	6'000-10'000	81
112779	120	7	50	2	A	6'000-10'000	82
112780	120	8	50	2	A	6'000-10'000	83
112781	120	9	50	2	A	6'000-10'000	84
112782	120	10	50	2	A	6'000-10'000	85
112783	120	-	50	2	B	6'000-10'000	86
112784	120	7	50	2	B	6'000-10'000	87
112785	120	8	50	2	B	6'000-10'000	88
112786	120	9	50	2	B	6'000-10'000	89
112787	120	10	50	2	B	6'000-10'000	90
112788	120	-	50	2	A	6'000-10'000	91
112789	120	11	50	2	A	6'000-10'000	92
112790	120	12	50	2	A	6'000-10'000	93
112791	120	13	50	2	A	6'000-10'000	94
112792	120	14	50	2	A	6'000-10'000	95
112793	120	15	50	2	A	6'000-10'000	96
112794	120	-	50	2	B	6'000-10'000	97
112795	120	11	50	2	B	6'000-10'000	98
112796	120	12	50	2	B	6'000-10'000	99
112797	120	13	50	2	B	6'000-10'000	100
112798	120	14	50	2	B	6'000-10'000	101
112799	120	15	50	2	B	6'000-10'000	102

Spare parts

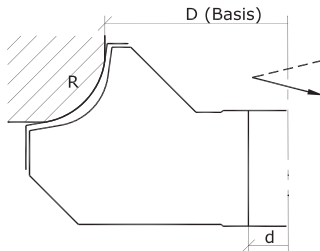
Art.Nr.		Index
216030	Reversible knives OERTLI, Format, R=3.0 Qual=HW	1-12, 35-46, 69-80
216031	Reversible knives OERTLI, Format, R=2.0 Qual=HW	1-12, 35-46, 69-80
216032	Reversible knives OERTLI, Format, R=4.0 Qual=HW	1-12, 35-46, 69-80
216034	Reversible knives OERTLI, Format, R=5.0 Qual=HW	1-12, 35-46, 69-80
216036	Reversible knives OERTLI, Format, R=6.0 Qual=HW	1-12, 35-46, 69-80
216038	Reversible knives OERTLI, Format, R=7.0 Qual=HW	13-22, 47-56, 81-90
216040	Reversible knives OERTLI, Format, R=8.0 Qual=HW	13-22, 47-56, 81-90
216042	Reversible knives OERTLI, Format, R=9.0 Qual=HW	13-22, 47-56, 81-92
216044	Reversible knives OERTLI, Format, R=10 Qual=HW	13-22, 47-56, 81-90
216046	Reversible knives OERTLI, Format, R=11 Qual=HW	23-34, 57-68, 91-102
216048	Reversible knives OERTLI, Format, R=12 Qual=HW	23-34, 57-68, 91-102
216049	Reversible knives OERTLI, Format, R=13 Qual=HW	23-34, 57-68, 91-102

Art.Nr.		Index
216050	Reversible knives OERTLI, Format, R=14 Qual=HW	23-34, 57-68, 91-102
216052	Reversible knives OERTLI, Format, R=15 Qual=HW	23-34, 57-68, 91-102
950340	Gib, Typ=W32 R=2-6	7-12, 41-46, 75-80
950341	Gib, Typ=W32 R=2-6	1-6, 35-40, 69-74
950342	Gib, Typ=W32 R=7-10	18-22, 52-56, 86-90
950343	Gib, Typ=W32 R=7-10	13-17, 47-51, 81-85
950344	Gib, Typ=W32 R=11-15	29-34, 63-68, 97-102
950345	Gib, Typ=W32 R=11-15	23-28, 57-62, 91-96
851062	Screws, M=5 D=9.0 L=6.3 Typ=Torx 20	1-102
851549	Set screws, M=6 L=12 Typ=ISK 3	1-102

Round-off cutter R=15-20 or 25-30 with inserted profile knives

Application: For rounding of edges • Spindle moulding machines

Design: Tungsten carbide profile knives • Profiled on one side, shear cut • Radii 15-20mm and 25-30mm useable in the same cutter body • Tool body in aluminium • MAN (manual feed)



Bore 30

Art. Nr.	D	R	d	Z	n	Index
112120	130	-	30	2	6'000-8'300	1
112130	130	15	30	2	6'000-8'300	2
112131	130	16	30	2	6'000-8'300	3
112132	130	17	30	2	6'000-8'300	4
112133	130	18	30	2	6'000-8'300	5
112134	130	19	30	2	6'000-8'300	6
112135	130	20	30	2	6'000-8'300	7
112125	130	-	30	2	6'000-7'400	8
112136	130	25	30	2	6'000-7'400	9
112137	130	26	30	2	6'000-7'400	10
112138	130	27	30	2	6'000-7'400	11
112139	130	28	30	2	6'000-7'400	12
112140	130	29	30	2	6'000-7'400	13
112141	130	30	30	2	6'000-7'400	14

Bore 40

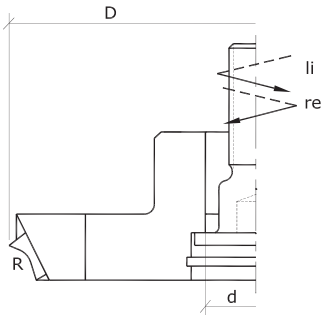
Art. Nr.	D	R	d	Z	n	Index
112126	130	-	40	2	6'000-8'300	15
112142	130	15	40	2	6'000-8'300	16
112143	130	16	40	2	6'000-8'300	17
112144	130	17	40	2	6'000-8'300	18
112145	130	18	40	2	6'000-8'300	19
112146	130	19	40	2	6'000-8'300	20
112147	130	20	40	2	6'000-8'300	21
112128	130	-	40	2	6'000-7'400	22
112148	130	25	40	2	6'000-7'400	23
112149	130	26	40	2	6'000-7'400	24
112150	130	27	40	2	6'000-7'400	25
112151	130	28	40	2	6'000-7'400	26
112152	130	29	40	2	6'000-7'400	27
112153	130	30	40	2	6'000-7'400	28

Bore 50

Art. Nr.	D	R	d	Z	n	Index
112127	140	-	50	2	6'000-7'800	29
112154	140	15	50	2	6'000-7'800	30
112155	140	16	50	2	6'000-7'800	31
112156	140	17	50	2	6'000-7'800	32
112157	140	18	50	2	6'000-7'800	33
112158	140	19	50	2	6'000-7'800	34
112159	140	20	50	2	6'000-7'800	35
112129	140	-	50	2	5'500-7'100	36
112160	140	25	50	2	5'500-7'100	37
112161	140	26	50	2	5'500-7'100	38
112162	140	27	50	2	5'500-7'100	39
112163	140	28	50	2	5'500-7'100	40
112164	140	29	50	2	5'500-7'100	41
112165	140	30	50	2	5'500-7'100	42

Spare parts

Art.Nr.		Index
193681	Profile knives, B=45 Typ=R=15 Qual=HW	1-7, 15-21, 29-35
193682	Profile knives, B=45 Typ=R=16 Qual=HW	1-7, 15-21, 29-35
193683	Profile knives, B=45 Typ=R=17 Qual=HW	1-7, 15-21, 29-35
193684	Profile knives, B=45 Typ=R=18 Qual=HW	1-7, 15-21, 29-35
193685	Profile knives, B=45 Typ=R=19 Qual=HW	1-7, 15-21, 29-35
193686	Profile knives, B=45 Typ=R=20 Qual=HW	1-7, 15-21, 29-35
193687	Profile knives, B=55 Typ=R=25 Qual=HW	8-14, 22-28, 36-42
193688	Profile knives, B=55 Typ=R=26 Qual=HW	8-14, 22-28, 36-42
193689	Profile knives, B=55 Typ=R=27 Qual=HW	8-14, 22-28, 36-42
193690	Profile knives, B=55 Typ=R=28 Qual=HW	8-14, 22-28, 36-42
193691	Profile knives, B=55 Typ=R=29 Qual=HW	8-14, 22-28, 36-42
193692	Profile knives, B=55 Typ=R=30 Qual=HW	8-14, 22-28, 36-42
950379	Clamping wedge	1-42
950388	Gib, L=45	1-7, 15-21, 29-35
950389	Gib, L=55	8-14, 22-28, 36-42
851341	Set screws, M=6 L=18 Typ=Torx 15	1-42

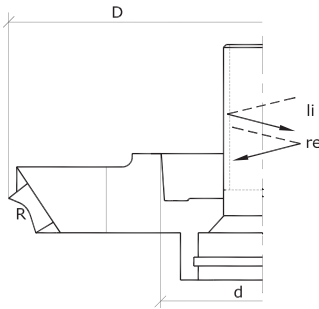


Diamond round-off cutter R=1-12

Application: For rounding of edges • Edge-banding machines

Design: Diamond tipped • With one-sided shear cut angle • Limited regrinding range • Tool body in steel • MEC (mechanical feed)

Art. Nr.	D	R	d	Z	n max.
455138	79	1	HSK25R	4 re.	12'000
455089	79	1	HSK25R	4 li.	12'000
455139	79	2	HSK25R	4 re.	12'000
455090	79	2	HSK25R	4 li.	12'000
455140	79	2	HSK25R	6 re.	12'000
455091	79	2	HSK25R	6 li.	12'000
455141	79	3	HSK25R	4 re.	12'000
455092	79	3	HSK25R	4 li.	12'000
455142	79	3	HSK25R	6 re.	12'000
455093	79	3	HSK25R	6 li.	12'000
455143	79	4	HSK25R	4 re.	12'000
455094	79	4	HSK25R	4 li.	12'000
455144	79	4	HSK25R	6 re.	12'000
455095	79	4	HSK25R	6 li.	12'000
455145	79	5	HSK25R	4 re.	12'000
455096	79	5	HSK25R	4 li.	12'000
455146	79	5	HSK25R	6 re.	12'000
455097	79	5	HSK25R	6 li.	12'000
455147	79	6	HSK25R	4 re.	12'000
455098	79	6	HSK25R	4 li.	12'000
455148	79	7	HSK25R	4 re.	12'000
455099	79	7	HSK25R	4 li.	12'000
455149	79	8	HSK25R	4 re.	12'000
455100	79	8	HSK25R	4 li.	12'000
455150	79	9	HSK25R	4 re.	12'000
455101	79	9	HSK25R	4 li.	12'000
455151	79	10	HSK25R	4 re.	12'000
455102	79	10	HSK25R	4 li.	12'000
455152	79	11	HSK25R	4 re.	12'000
455103	79	11	HSK25R	4 li.	12'000
455153	79	12	HSK25R	4 re.	12'000
455104	79	12	HSK25R	4 li.	12'000



Diamond round-off cutter R=1-5

Application: For rounding of edges • Edge-banding machines

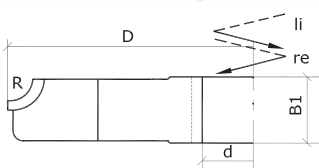
Design: Diamond tipped • With one-sided shear cut angle • Limited regrinding range • Tool body in steel • MEC (mechanical feed)

Art. Nr.	D	R	d	Z	n max.
455154	69	1.0	HSK32	4 re.	18'000
455105	69	1.0	HSK32	4 li.	18'000
455155	69	1.5	HSK32	4 re.	18'000
455106	69	1.5	HSK32	4 li.	18'000
455156	69	2.0	HSK32	4 re.	18'000
455157	69	2.0	HSK32	6 re.	18'000
455107	69	2.0	HSK32	4 li.	18'000
455108	69	2.0	HSK32	6 li.	18'000
455158	69	2.5	HSK32	4 re.	18'000
455109	69	2.5	HSK32	4 li.	18'000
455159	70	3.0	HSK32	4 re.	18'000
455110	70	3.0	HSK32	4 li.	18'000
455160	70	3.0	HSK32	6 re.	18'000
455111	70	3.0	HSK32	6 li.	18'000
455161	72	3.5	HSK32	4 re.	18'000
455112	72	3.5	HSK32	4 li.	18'000
455162	72	4.0	HSK32	4 re.	18'000
455113	72	4.0	HSK32	4 li.	18'000
455163	72	4.0	HSK32	6 re.	18'000
455114	72	4.0	HSK32	6 li.	18'000
455164	72	4.5	HSK32	4 re.	18'000
455115	72	4.5	HSK32	4 li.	18'000
455165	72	5.0	HSK32	4 re.	18'000
455116	72	5.0	HSK32	4 li.	18'000
455166	72	5.0	HSK32	6 re.	18'000
455117	72	5.0	HSK32	6 li.	18'000

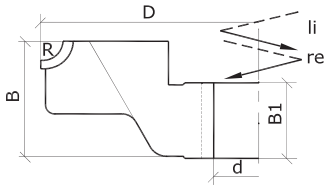
Diamond round-off cutter R=2-5

Application: For rounding of edges • Edge-banding machines

Design: Diamond tipped • With one-sided shear cut angle • Limited regrinding range • Tool body in steel • MEC (mechanical feed)



Art. Nr.	D	B1	R	d	Z	n max.
455069	73	12	2	16+DKN	4 re.	18'000
455118	73	12	2	16+DKN	4 li.	18'000
455070	73	12	3	16+DKN	4 re.	18'000
455119	73	12	3	16+DKN	4 li.	18'000
455071	73	12	4	16+DKN	4 re.	18'000
455120	73	12	4	16+DKN	4 li.	18'000
455072	73	12	5	16+DKN	4 re.	18'000
455121	73	12	5	16+DKN	4 li.	18'000

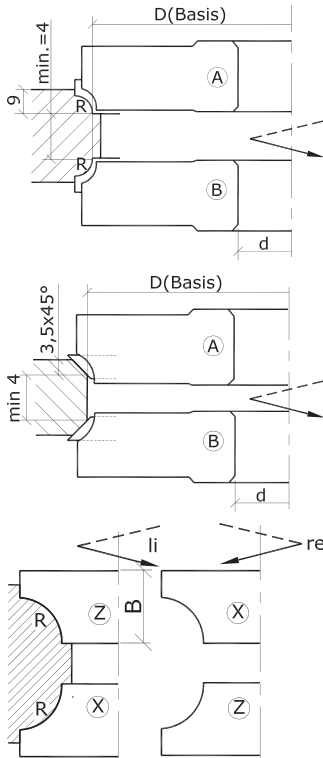


Diamond round-off cutter R=2-5

Application: For rounding of edges • Edge-banding machines

Design: Diamond tipped • With one-sided shear cut angle • Limited regrinding range • Tool body in steel • MEC (mechanical feed)

Art. Nr.	D	B	B1	R	d	Z	n max.
455073	70	20	12	3	16+DKN	4 re.	18'000
455122	70	20	12	3	16+DKN	4 li.	18'000
455074	82	20	12	2	20+DKN	4 re.	18'000
455123	82	20	12	2	20+DKN	4 li.	18'000
455075	82	20	12	3	20+DKN	4 re.	18'000
455124	82	20	12	3	20+DKN	4 li.	18'000
455076	82	20	12	4	20+DKN	4 re.	18'000
455125	82	20	12	4	20+DKN	4 li.	18'000
455077	82	20	12	5	20+DKN	4 re.	18'000
455126	82	20	12	5	20+DKN	4 li.	18'000



Quadrant moulding- and bevel cutter R=4-6 and 45° with reversible knives

Application: For quadrant moulding or bevelling in solid wood or panel materials • Spindle moulding machines

Design: Tungsten carbide reversible knives • Profiled on both sides, shear cut • Quadrant moulding- and bevel knives useable in the same cutter body • For use with bevel knives, shims of 3.5mm thickness required • Tool body in steel • MAN (manual feed)

Bore 30

Art. Nr.	D	R	α	d	Z	Pos.	n	Index
104007	120	-	-	30	2	A	6'000-12'200	1
104062	120	4		30	2	A	6'000-12'200	2
104063	120	5		30	2	A	6'000-12'200	3
104064	120	6		30	2	A	6'000-12'200	4
104065	120		45°	30	2	A	6'000-12'200	5
104008	120	-	-	30	2	B	6'000-12'200	6
104066	120	4		30	2	B	6'000-12'200	7
104067	120	5		30	2	B	6'000-12'200	8
104068	120	6		30	2	B	6'000-12'200	9
104069	120		45°	30	2	B	6'000-12'200	10

Bore 40

Art. Nr.	D	R	α	d	Z	Pos.	n	Index
104042	120	-	-	40	2	A	6'000-12'200	11
104043	120	4		40	2	A	6'000-12'200	12
104044	120	5		40	2	A	6'000-12'200	13
104045	120	6		40	2	A	6'000-12'200	14
104046	120		45°	40	2	A	6'000-12'200	15
104047	120	-	-	40	2	B	6'000-12'200	16
104048	120	4		40	2	B	6'000-12'200	17
104049	120	5		40	2	B	6'000-12'200	18
104084	120	6		40	2	B	6'000-12'200	19
104085	120		45°	40	2	B	6'000-12'200	20

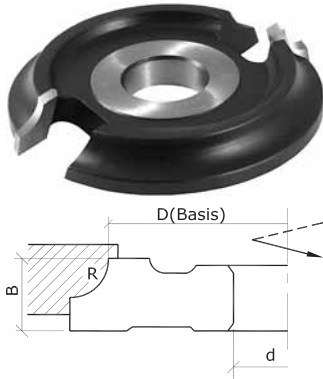
Bore 50

Art. Nr.	D	R	α	d	Z	Pos.	n	Index
104013	120	-	-	50	2	A	6'000-12'200	21
104090	120	4		50	2	A	6'000-12'200	22
104091	120	5		50	2	A	6'000-12'200	23
104092	120	6		50	2	A	6'000-12'200	24
104093	120		45°	50	2	A	6'000-12'200	25
104014	120	-	-	50	2	B	6'000-12'200	26
104094	120	4		50	2	B	6'000-12'200	27
104095	120	5		50	2	B	6'000-12'200	28
104096	120	6		50	2	B	6'000-12'200	29
104097	120		45°	50	2	B	6'000-12'200	30

Spare parts

Art.Nr.		Index
216204	Reversible knives OERTLI, Format, R=5.0 Typ=Z B=9.5 Qual=HW	1-5, 11-15, 21-25
216206	Reversible knives OERTLI, Format, R=5.0 Typ=X B=9.5 Qual=HW	6-10, 16-20, 26-30
216246	Reversible knives OERTLI, Format, R=4.0 Typ=Z B=9.5 Qual=HW	1-5, 11-15, 21-25
216248	Reversible knives OERTLI, Format, R=4.0 Typ=X B=9.5 Qual=HW	6-10, 16-20, 26-30
216250	Reversible knives OERTLI, Format, R=6.0 Typ=Z B=9.5 Qual=HW	1-5, 11-15, 21-25

Art.Nr.		Index
216252	Reversible knives OERTLI, Format, R=6.0 Typ=X B=9,5 Qual=HW	6-10, 16-20, 26-30
216629	Reversible knives OERTLI, Format, $\approx 45^\circ$ Typ=Z B=6 Qual=HW	1-5, 11-15, 21-25
216630	Reversible knives OERTLI, Format, $\approx 45^\circ$ Typ=X B=6 Qual=HW	6-10, 16-20, 26-30
851077	Screws, M=4 D=6.5 L=16 Typ=Torx 20	1-30
851294	Shims for four-corner knives, B=0.5	1-30
851295	Shims for four-corner knives, B=1.0	1-30
851296	Shims for four-corner knives, B=2.0	1-30



Quadrant moulding cutter, tungsten carbide tipped

Application: For quadrant moulding in solid wood or panel materials • Spindle moulding machines

Design: Tungsten carbide tipped • Profiled on one side, shear cut • Tool body in steel • MAN (manual feed)

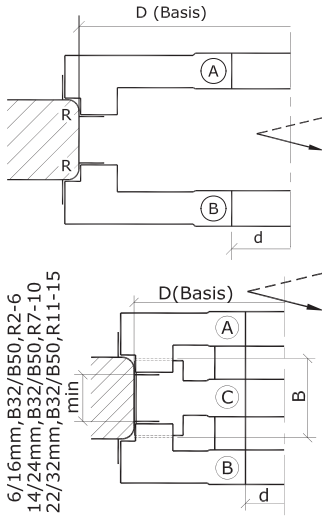
Art. Nr.	D	R	B	d	Z	n
115122	110	5	14	30	2	7'700-11'000
115132	100	10	21	30	2	7'700-11'000
115142	90	15	26	30	2	7'700-11'000
115152	100	20	32	30	2	6'400-9'500
115162	90	25	36	30	2	6'400-9'500
115172	100	30	43	30	2	5'500-8'300



Combi round-off cutter R=5, R=10 and R=15 with reversible knives

Application: For one- or double sided rounding in solid wood or panel materials • Spindle moulding machines

Design: Tungsten carbide reversible knives • Profiled on both sides, shear cut • Suitable to WS jointing cutter MAN • Tool body in steel • MAN (manual feed)



Bore 30

Art. Nr.	D	R	d	Z	Pos.	n	Index
112591	120	5	30	2	A	6'000-10'000	1
112592	120	5	30	2	B	6'000-10'000	2
112594	120	10	30	2	A	6'000-10'000	3
112595	120	10	30	2	B	6'000-10'000	4
112598	120	15	30	2	A	6'000-10'000	5
112599	120	15	30	2	B	6'000-10'000	6

Bore 40

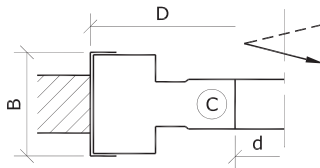
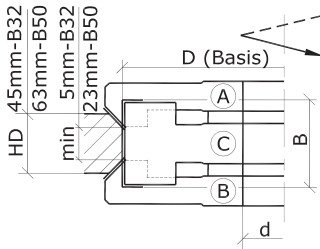
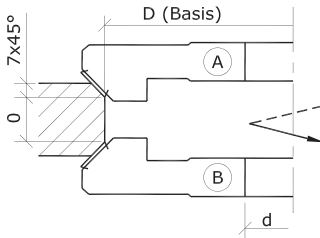
Art. Nr.	D	R	d	Z	Pos.	n	Index
112578	120	5	40	2	A	6'000-10'000	7
112579	120	5	40	2	B	6'000-10'000	8
112596	120	10	40	2	A	6'000-10'000	9
112597	120	10	40	2	B	6'000-10'000	10
112602	120	15	40	2	A	6'000-10'000	11
112603	120	15	40	2	B	6'000-10'000	12

Bore 50

Art. Nr.	D	R	d	Z	Pos.	n	Index
112606	140	5	50	2	A	5'500-10'000	13
112607	140	5	50	2	B	5'500-10'000	14
112610	140	10	50	2	A	5'500-10'000	15
112611	140	10	50	2	B	5'500-10'000	16
112614	140	15	50	2	A	5'500-10'000	17
112615	140	15	50	2	B	5'500-10'000	18

Spare parts

Art.Nr.		Index
216034	Reversible knives OERTLI, Format, R=5.0 Qual=HW	1, 2, 7, 8, 13, 14
216044	Reversible knives OERTLI, Format, R=10 Qual=HW	3, 4, 9, 10, 15, 16
216052	Reversible knives OERTLI, Format, R=15 Qual=HW	5, 6, 11, 12, 17, 18
950340	Gib, Typ=W32 R=2-6	2, 8, 14
950341	Gib, Typ=W32 R=2-6	1, 7, 13
950342	Gib, Typ=W32 R=7-10	4, 10, 16
950343	Gib, Typ=W32 R=7-10	3, 9, 15
950344	Gib, Typ=W32 R=11-15	6, 12, 18
950345	Gib, Typ=W32 R=11-15	5, 11, 17
851062	Screws, M=5 D=9.0 L=6.3 Typ=Torx 20	1-18
851549	Set screws, M=6 L=12 Typ=ISK 3	1-18



Combi bevel cutter 45° with reversible knives

Application: For cutting of solid wood, wood- and panel materials • Spindle moulding machines

Design: Tungsten carbide reversible knives • 4 cutting edges, straight cut • Suitable to WS jointing cutter MAN • Max. bevel size 7x45° • Tool body in steel • MAN (manual feed)

Art. Nr.	D	d	Z	Pos.	n	Index
113010	120	30	2	A	5'700-10'000	1
113011	120	30	2	B	5'700-10'000	2
113012	120	40	2	A	5'700-10'000	3
113013	120	40	2	B	5'700-10'000	4
113014	140	50	2	A	5'500-10'000	5
113015	140	50	2	B	5'500-10'000	6

Spare parts

Art.Nr.	Index
216009 Reversible knives OERTLI, Format, B=14.0 h=14.0 a=2.0 Qual=HW	1-6
851038 Screws, M=5 D=8 L=6.3 Typ=Torx 20	1-6

Combi jointing cutter with reversible knives

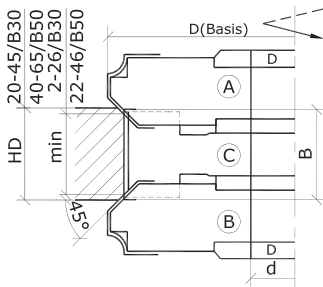
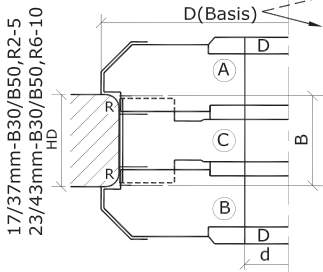
Application: For jointing in solid wood or panel materials • Spindle moulding machines

Design: Tungsten carbide reversible knives • 2 cutting edges, straight cut • Suitable to WS rounding- and bevel cutter MAN • Tool body in steel • MAN (manual feed)

Art. Nr.	D	B	d	Z	n	Index
106026	120	32	30	2	6'000-10'000	1
106036	120	32	40	2	6'000-10'000	2
106034	140	32	50	2	5'500-10'000	3
106028	120	50	30	2	6'000-10'000	4
106033	120	50	40	2	6'000-10'000	5
106035	140	50	50	2	5'500-10'000	6

Spare parts

Art.Nr.	Index
217030 Reversible knives OERTLI, straight, B=32 h=8 a=1.5 Qual=HW	1-3
217050 Reversible knives OERTLI, straight, B=50 h=8 a=1.5 Qual=HW	4-6
950915 Gib, L=29.1 Typ=+10°	1-3
950921 Gib, L=44 Typ=0°/4-5°	4-6
851347 Screws, M=6 D=9.5 L=20 Typ=Torx 20	1-6



Combi round-off-, bevel-, jointing cutter R=2-5 or R=6-10, ECOline

Application: For one- or double sided rounding, beveling and jointing in solid wood or panel materials • Spindle moulding machines

Design: Tungsten carbide reversible knives • Profiled on one side, straight cut • Radius- and bevel knives useable in the same cutter body • Basic equipment with radius 5mm or radius 10mm • Cutter set only suitable for MAN operation with cover discs top and bottom • Tool body in steel • MAN (manual feed)

Round-off- and beveling cutters

Art. Nr.	D	R	d	Z	Pos.	n	Index
112000	100	5	30	2	A	6'800-10'000	1
112001	100	5	30	2	B	6'800-10'000	2
112002	100	10	30	2	A	6'500-10'000	3
112003	100	10	30	2	B	6'500-10'000	4

Jointing cutter

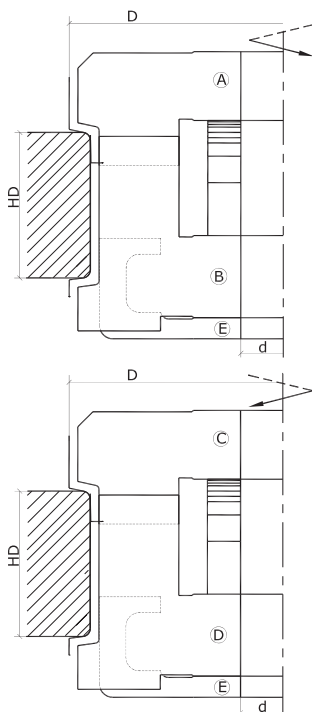
Art. Nr.	D	B	d	Z	Pos.	n	Index
106049	100	30	30	2	C	7'600-10'000	5
106050	100	50	30	2	C	7'600-10'000	6

Covering disc

Art. Nr.	D	B	d	Pos.
112005	98	12	30	D

Spare parts

Art.Nr.	Index
217720	Reversible knives, straight, B=30 h=12 a=1.5 Qual=HW 5
217725	Reversible knives, straight, B=50 h=12 a=1.5 Qual=HW 6
217844	Reversible knives, Format, Typ=Pos. A / R=2.0 + 45° Qual=HW 1
217845	Reversible knives, Format, Typ=Pos. B / R=2.0 + 45° Qual=HW 2
217846	Reversible knives, Format, Typ=Pos. A / R=3.0 + 45° Qual=HW 1
217847	Reversible knives, Format, Typ=Pos. B / R=3.0 + 45° Qual=HW 2
217848	Reversible knives, Format, Typ=Pos. A / R=4.0 + 45° Qual=HW 1
217849	Reversible knives, Format, Typ=Pos. B / R=4.0 + 45° Qual=HW 2
217850	Reversible knives, Format, Typ=Pos. A / R=5.0 + 45° Qual=HW 1
217851	Reversible knives, Format, Typ=Pos. B / R=5.0 + 45° Qual=HW 2
217852	Reversible knives, Format, Typ=Pos. A / R=6.0 + 45° Qual=HW 3
217853	Reversible knives, Format, Typ=Pos. B / R=6.0 + 45° Qual=HW 4
217854	Reversible knives, Format, Typ=Pos. A / R=7.0 + 45° Qual=HW 3
217855	Reversible knives, Format, Typ=Pos. B / R=7.0 + 45° Qual=HW 4
217856	Reversible knives, Format, Typ=Pos. A / R=8.0 + 45° Qual=HW 3
217857	Reversible knives, Format, Typ=Pos. B / R=8.0 + 45° Qual=HW 4
217858	Reversible knives, Format, Typ=Pos. A / R=9.0 + 45° Qual=HW 3
217859	Reversible knives, Format, Typ=Pos. B / R=9.0 + 45° Qual=HW 4
217860	Reversible knives, Format, Typ=Pos. A / R=10 + 45° Qual=HW 3
217861	Reversible knives, Format, Typ=Pos. B / R=10 + 45° Qual=HW 4
629000	Shim- and spacer sets, d=30 B=1x0.1/0.5 + 2x0.2 + 8x1.0 + 4x5.0 D=60 NL=4/7.5/45 1-4



Combi round-off-, bevel-, jointing cutter R=1-8 and 45°

Application: For double-sided rounding, beveling and jointing in solid wood or panel materials • Four-sided moulding machines

Design: Tungsten carbide profile knives • Profiled on one side, shear cut • Radius- and bevel knives useable in the same cutter body • Tool body in steel • MEC (mechanical feed)

Combi round-off -, beveling- and jointing cutters

Art. Nr.	D	HD	R	α	d	Z	Pos.	n max.	Index
112050	179	12-55	1		40	3 li.	A, B, E	8'000	1
112051	179	12-55	1.5		40	3 li.	A, B, E	8'000	2
112052	179	12-55	2		40	3 li.	A, B, E	8'000	3
112053	179	12-55	3		40	3 li.	A, B, E	8'000	4
112054	179	12-55	4		40	3 li.	A, B, E	8'000	5
112055	179	12-55	5		40	3 li.	A, B, E	8'000	6
112056	179	12-55	6		40	3 li.	A, B, E	8'000	7
112057	179	12-55	7		40	3 li.	A, B, E	8'000	8
112058	179	12-55	8		40	3 li.	A, B, E	8'000	9
112059	179	12-55		8x45°	40	3 li.	A, B, E	8'000	10
112060	179	12-55		3x45°	40	3 li.	A, B, E	8'000	11
112061	179	12-55	1		40	3 re.	C, D, E	8'000	12
112062	179	12-55	1.5		40	3 re.	C, D, E	8'000	13
112063	179	12-55	2		40	3 re.	C, D, E	8'000	14
112064	179	12-55	3		40	3 re.	C, D, E	8'000	15
112065	179	12-55	4		40	3 re.	C, D, E	8'000	16
112066	179	12-55	5		40	3 re.	C, D, E	8'000	17
112067	179	12-55	6		40	3 re.	C, D, E	8'000	18
112068	179	12-55	7		40	3 re.	C, D, E	8'000	19
112069	179	12-55	8		40	3 re.	C, D, E	8'000	20
112070	179	12-55		8x45°	40	3 re.	C, D, E	8'000	21
112071	179	12-55		3x45°	40	3 re.	C, D, E	8'000	22

Single cutter

Art. Nr.	D	R	α	d	Z	Pos.	n max.
112100	179	-	-	40	3 li.	A	8'000
112101	179	-	-	40	3 li.	B	8'000
112105	179	-	-	40	3 re.	C	8'000
112106	179	-	-	40	3 re.	D	8'000

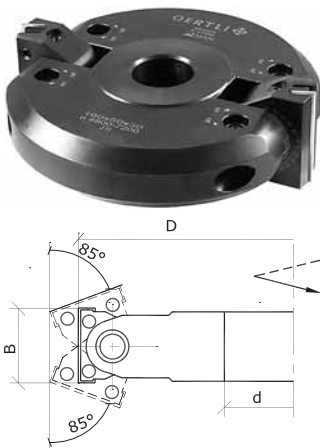
Cover disc

Art. Nr.	Pos.
112110	E

Spare parts

Art.Nr.		Index
192940	Profile knives, B=35 Typ=Pos. A / R=8.0 Qual=HW	9
193251	Profile knives, B=35 Typ=Pos. A / 8x45° Qual=HW	10
193265	Profile knives, B=65 Typ=Pos. B / 8x45° Qual=HW	10
193331	Profile knives, B=65 Typ=Pos. B / R=8.0 Qual=HW	9
193332	Profile knives, B=65 Typ=Pos. B / R=2.0 Qual=HW	3
193333	Profile knives, B=35 Typ=Pos. A / R=2.0 Qual=HW	3
193334	Profile knives, B=65 Typ=Pos. B / R=3.0 Qual=HW	4
193335	Profile knives, B=35 Typ=Pos. A / R=3.0 Qual=HW	4
193336	Profile knives, B=65 Typ=Pos. B / R=5.0 Qual=HW	6
193337	Profile knives, B=35 Typ=Pos. A / R=5.0 Qual=HW	6
193338	Profile knives, B=65 Typ=Pos. D / R=8.0 Qual=HW	20
193339	Profile knives, B=35 Typ=Pos. C / R=8.0 Qual=HW	20

Art.Nr.		Index
193340	Profile knives, B=65 Typ=Pos. D / R=2.0 Qual=HW	14
193341	Profile knives, B=35 Typ=Pos. C / R=2.0 Qual=HW	14
193342	Profile knives, B=65 Typ=Pos. D / R=3.0 Qual=HW	15
193343	Profile knives, B=35 Typ=Pos. C / R=3.0 Qual=HW	15
193344	Profile knives, B=65 Typ=Pos. D / R=5.0 Qual=HW	17
193345	Profile knives, B=35 Typ=Pos. C / R=5.0 Qual=HW	17
193520	Profile knives, B=65 Typ=Pos. B / R=1.0 Qual=HW	1
193521	Profile knives, B=35 Typ=Pos. A / R=1.0 Qual=HW	1
193522	Profile knives, B=65 Typ=Pos. D / R=1.0 Qual=HW	12
193523	Profile knives, B=35 Typ=Pos. C / R=1.0 Qual=HW	12
193524	Profile knives, B=65 Typ=Pos. B / R=1.5 Qual=HW	2
193525	Profile knives, B=35 Typ=Pos. A / R=1.5 Qual=HW	2
193526	Profile knives, B=65 Typ=Pos. D / R=1.5 Qual=HW	13
193527	Profile knives, B=35 Typ=Pos. C / R=1.5 Qual=HW	13
193528	Profile knives, B=65 Typ=Pos. B / R=6.0 Qual=HW	7
193529	Profile knives, B=35 Typ=Pos. A / R=6.0 Qual=HW	7
193530	Profile knives, B=65 Typ=Pos. D / R=6.0 Qual=HW	18
193531	Profile knives, B=35 Typ=Pos. C / R=6.0 Qual=HW	18
193532	Profile knives, B=65 Typ=Pos. B / R=7.0 Qual=HW	8
193533	Profile knives, B=35 Typ=Pos. A / R=7.0 Qual=HW	8
193534	Profile knives, B=65 Typ=Pos. D / R=7.0 Qual=HW	19
193535	Profile knives, B=35 Typ=Pos. C / R=7.0 Qual=HW	19
193536	Profile knives, B=65 Typ=Pos. B / 3x45° Qual=HW	11
193537	Profile knives, B=35 Typ=Pos. A / 3x45° Qual=HW	11
193538	Profile knives, B=65 Typ=Pos. D / 3x45° Qual=HW	22
193539	Profile knives, B=35 Typ=Pos. C / 3x45° Qual=HW	22
193540	Profile knives, B=65 Typ=Pos. D / 8x45° Qual=HW	21
193541	Profile knives, B=35 Typ=Pos. C / 8x45° Qual=HW	21
203824	Profile knives, B=65 Typ=Pos. B / R=4.0 Qual=HW	5
203825	Profile knives, B=35 Typ=Pos. A / R=4.0 Qual=HW	5
203826	Profile knives, B=65 Typ=Pos. D / R=4.0 Qual=HW	16
203827	Profile knives, B=35 Typ=Pos. C / R=4.0 Qual=HW	16
950379	Clamping wedge	1-22
950387	Gib, L=35	1-22
950390	Gib, L=65	1-22
851341	Set screws, M=6 L=18 Typ=Torx 15	1-22



Bevel- and jointing cutter with reversible knives

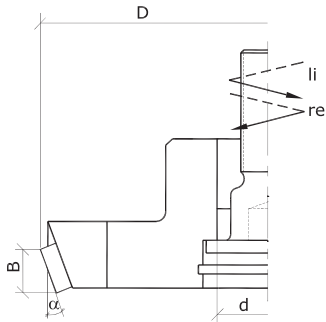
Application: For jointing and beveling in solid wood or panel materials • Spindle moulding machines

Design: Tungsten carbide reversible knives • 2 cutting edges, straight cut • Indefinite swivel adjustment, with ball pressure every 7.5° • Tool body in steel • MAN (manual feed)

Art. Nr.	D	B	d	Z	n	Index
454521	160	50	30	2	4'800-7'200	1
454523	160	50	40	2	4'800-7'200	2
454524	160	50	50	2	4'800-7'200	3
454622	160	60	30	2	4'800-6'000	4

Spare parts

Art.Nr.		Index
217725	Reversible knives, straight, B=50 h=12 a=1.5 Qual=HW	1-3
217728	Reversible knives, straight, B=60 h=12 a=1.5 Qual=HW	4
950637	Gib, L=48	1-3
950638	Gib, L=58	4
851487	Set screws, M=6 L=8 Typ=ISK 3	1-4

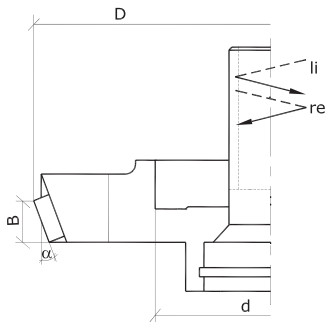


Diamond bevel cutter

Application: On both sides laminated chip boards, as well as veneered- and plastic-laminated furniture boards • Edge-banding machines

Design: Diamond tipped • With one-sided shear cut angle • Limited regrinding range • Tool body in steel • MEC (mechanical feed)

Art. Nr.	D	B	α	d	Z	n max.
455130	73	6	20°	HSK25R	4 re.	12'000
455081	73	6	20°	HSK25R	4 li.	12'000

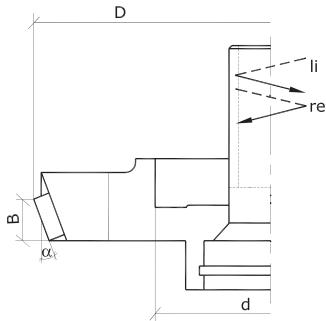


Diamond bevel cutter

Application: On both sides laminated chip boards, as well as veneered- and plastic-laminated furniture boards • Edge-banding machines

Design: Diamond tipped • With one-sided shear cut angle • Limited regrinding range • Tool body in steel • MEC (mechanical feed)

Art. Nr.	D	B	α	d	Z	n max.
455131	64	6	20°	HSK32	4 re.	18'000
455082	64	6	20°	HSK32	4 li.	18'000

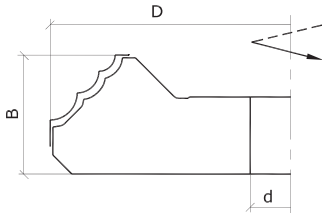


Diamond bevel cutter

Application: On both sides laminated chip boards, as well as veneered- and plastic-laminated furniture boards • Edge-banding machines

Design: Diamond tipped • With one-sided shear cut angle • Limited regrinding range • Integrated chip guide channel, chip ejection downwards • Tool body in steel • MEC (mechanical feed)

Art. Nr.	D	B	α	d	Z	n max.
455132	70	6	20°	HSK32	4 re.	18'000
455083	70	6	20°	HSK32	4 li.	18'000
455133	70	6	20°	HSK32	6 re.	18'000
455084	70	6	20°	HSK32	6 li.	18'000
455134	70	6	20°	HSK32	8 re.	18'000
455085	70	6	20°	HSK32	8 li.	18'000
455135	70	6	45°	HSK32	4 re.	18'000
455086	70	6	45°	HSK32	4 li.	18'000
455136	70	6	45°	HSK32	6 re.	18'000
455087	70	6	45°	HSK32	6 li.	18'000
455137	70	6	45°	HSK32	8 re.	18'000
455088	70	6	45°	HSK32	8 li.	18'000



Multi-profile cutter with inserted profile knives

Application: For rounding or bevelling in solid wood or panel materials • Spindle moulding machines

Design: Tungsten carbide profile knives • Profiled on one side, shear cut • 4 different profile knives useable in the same cutter body • Tool body in aluminium • MAN (manual feed)

Bore 30

Art. Nr.	D	B	R	d	Z	n	Fig.	Index
161000	178	45	-	30	2	6'000-8'100		1
161001	178	45	3/6/8	30	2	6'000-8'100	1	2
161002	178	45	2/5/7	30	2	6'000-8'100	2	3
161003	178	45	1.5/4/45°	30	2	6'000-8'100	3	4
161004	178	45	6/8/10	30	2	6'000-8'100	4	5

Bore 40

Art. Nr.	D	B	R	d	Z	n	Fig.	Index
161010	178	45	-	40	2	6'000-8'100		6
161011	178	45	3/6/8	40	2	6'000-8'100	1	7
161012	178	45	2/5/7	40	2	6'000-8'100	2	8
161013	178	45	1.5/4/45°	40	2	6'000-8'100	3	9
161014	178	45	6/8/10	40	2	6'000-8'100	4	10

Bore 50

Art. Nr.	D	B	R	d	Z	n	Fig.	Index
161005	178	45	-	50	2	6'000-8'100		11
161006	178	45	3/6/8	50	2	6'000-8'100	1	12
161007	178	45	2/5/7	50	2	6'000-8'100	2	13
161008	178	45	1.5/4/45°	50	2	6'000-8'100	3	14
161009	178	45	6/8/10	50	2	6'000-8'100	4	15

Spare parts

Art.Nr.		Index
203427	Profile knives, B=45 Typ=R=3/6/8 Qual=HW	1-15
203428	Profile knives, B=45 Typ=R=2/5/7 Qual=HW	1-15
203429	Profile knives, B=45 Typ=R=1.5/4/45° Qual=HW	1-15
203430	Profile knives, B=45 Typ=R=6/8/10 Qual=HW	1-15
950379	Clamping wedge	1-15
950388	Gib, L=45	1-15
851341	Set screws, M=6 L=18 Typ=Torx 15	1-15

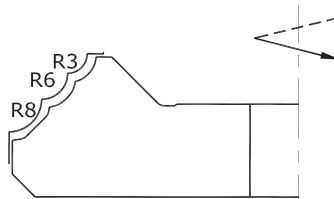


Fig. 1

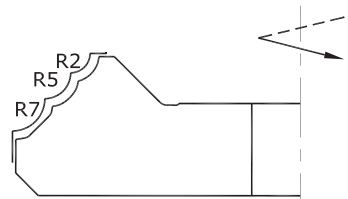


Fig. 2

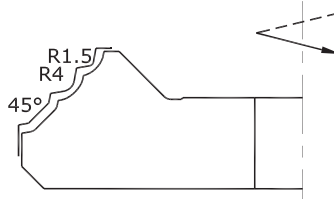


Fig. 3

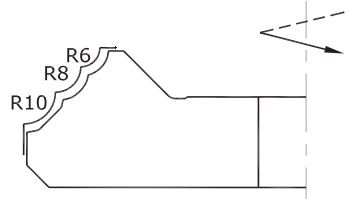
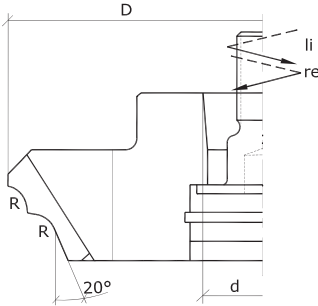


Fig. 4

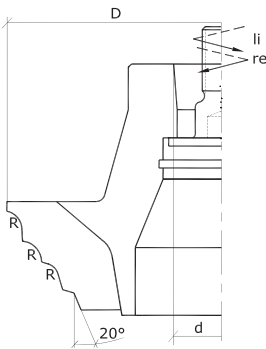


Diamond multi-profile cutter

Application: For rounding of edges • Edge-banding machines

Design: Diamond tipped • With one-sided shear cut angle • Limited regrinding range • Tool body in steel • MEC (mechanical feed)

Art. Nr.	D	R	d	Z	n max.
455078	85	3/2/20°	HSK25R	4 re.	12'000
455127	85	3/2/20°	HSK25R	4 li.	12'000

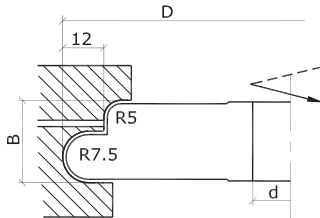


Diamond multi-profile cutter

Application: For rounding of edges • Edge-banding machines

Design: Diamond tipped • With one-sided shear cut angle • Limited regrinding range • Tool body in steel • MEC (mechanical feed)

Art. Nr.	D	R	d	Z	n max.
455079	90	3/2/1.5/20°	HSK25R	4 re.	12'000
455080	90	3/2/1.5/20°	HSK25R	6 re.	12'000
455128	90	3/2/1.5/20°	HSK25R	4 li.	12'000
455129	90	3/2/1.5/20°	HSK25R	6 li.	12'000



Half-round hollow-cutter R=7.5 and R=5 with inserted profile knives

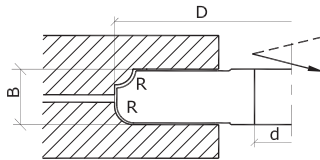
Application: For cutting of half-round hollow flutes in solid wood or panel materials • Spindle moulding machines

Design: Tungsten carbide profile knives • Profiled on one side, straight cut • Tool body in steel • MAN (manual feed)

Art. Nr.	D	B	R	d	Z	n	Index
105007	160	24	7.5/5	30	2	6'000-10'100	1
105008	160	24	7.5/5	40	2	6'000-10'100	2
105009	160	24	7.5/5	50	2	6'000-10'100	3

Spare parts

Art.Nr.		Index
139404	Profile knives, B=25 Typ=R=7.5/5 Qual=HW	1-3
950379	Clamping wedge	1-3
950385	Gib, L=25	1-3
851341	Set screws, M=6 L=18 Typ=Torx 15	1-3



Half-round hollow- and round-off cutter R=8/8 and R=10/10 with inserted profile knives

Application: For rounding or half-round hollow cutting in solid wood or panel materials • Spindle moulding machines

Design: Tungsten carbide profile knives • Profiled on one side, straight cut • Tool body in steel • MAN (manual feed)

Bore 30

Art. Nr.	D	B	R	d	Z	n	Index
168057	150	24	-	30	2	6'000-10'800	1
168068	150	24	8/8	30	2	6'000-10'800	2
168069	150	24	10/10	30	2	6'000-10'800	3

Bore 40

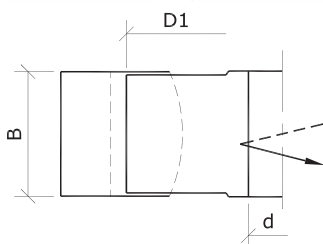
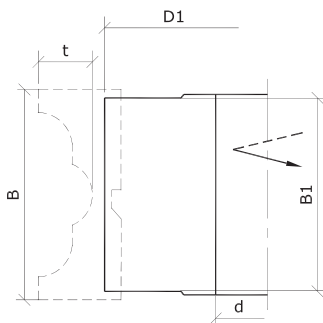
Art. Nr.	D	B	R	d	Z	n	Index
168058	150	24	-	40	2	6'000-10'800	4
168101	150	24	8/8	40	2	6'000-10'800	5
168102	150	24	10/10	40	2	6'000-10'800	6

Bore 50

Art. Nr.	D	B	R	d	Z	n	Index
168059	150	24	-	50	2	6'000-10'800	7
168103	150	24	8/8	50	2	6'000-10'800	8
168105	150	24	10/10	50	2	6'000-10'800	9

Spare parts

Art.Nr.		Index
139449	Profile knives, B=25 Typ=R=8/8 Qual=HW	1-9
139450	Profile knives, B=25 Typ=R=10/10 Qual=HW	1-9
950379	Clamping wedge	1-9
950385	Gib, L=25	1-9
851341	Set screws, M=6 L=18 Typ=Torx 15	1-9



Universal profile cutterhead PROFI-VIT 168.10

Application: Universal tool for profiling of solid wood or panel materials • Edge-banding machines and moulding machines

Design: Profileable tungsten carbide knives • Profile knife, one-sided profileable, straight cut • Without chip limitors • Basic equipment with straight pressure jaws; backing plates and profile knives to be ordered separately • Tool body in steel • MEC (mechanical feed)

Bore 40

Art. Nr.	D1	B	B1	t max.	d	Z	n max.	Index
168018	124	25/35	22	16.8	40	2	8'200	1
168017	124	35/45/(55)	42	16.8 (10.3)	40	2	8'200	2
168019	124	55/65/80	60	20.5	40	2	8'000	3
168040	144	35/45/(55)	42	16.8 (10.3)	40	4	9'000	4
168045	144	55/65/80	60	16.8 (10.3)	40	4	9'000	5

Bore 50

Art. Nr.	D1	B	B1	t max.	d	Z	n max.	Index
168015	124	35/45/(55)	42	16.8 (10.3)	50	2	8'200	6
168035	124	55/65/80	60	20.5	50	2	8'000	7
168042	144	35/45/(55)	42	16.8 (10.3)	50	4	9'000	8
168049	144	55/65/80	60	16.8 (10.3)	50	4	9'000	9

Spare parts

Art.Nr.		Index
168104	Gib, L=22	1
168124	Gib, L=42	2, 4, 6, 8
168136	Gib, L=50	2, 4, 6, 8
168144	Gib, L=60	3, 5, 7, 9
851419	Set screws, M=6 L=20 Typ=ISK 3	1-9
851421	Set screws, M=8 L=25 Typ=ISK 4	1-9

Universal profile cutterhead ECOline

Application: Universal tool for profiling of solid wood for small production series • Spindle moulding machines

Design: SP profile knives • Profile knife, one-sided profileable, straight cut • With profiled chip limitors • Safe knife clamping system • Tool body in steel • MAN (manual feed)

Universal profile cutterhead

Art. Nr.	D1	B	d	Z	n	Index
500000	120	40	30	2	5'100-7'900	1
500003	120	40	40	2	4'800-7'700	2
500006	120	40	50	2	4'800-7'700	3

Wooden box

Art. Nr.	
500002	

Spare parts

Art.Nr.		Index
950238	Gib, L=38	1-3
851088	Set screws, M=8 L=12 Typ=ISK 4	1-3

Profile knives/Chip-limitors

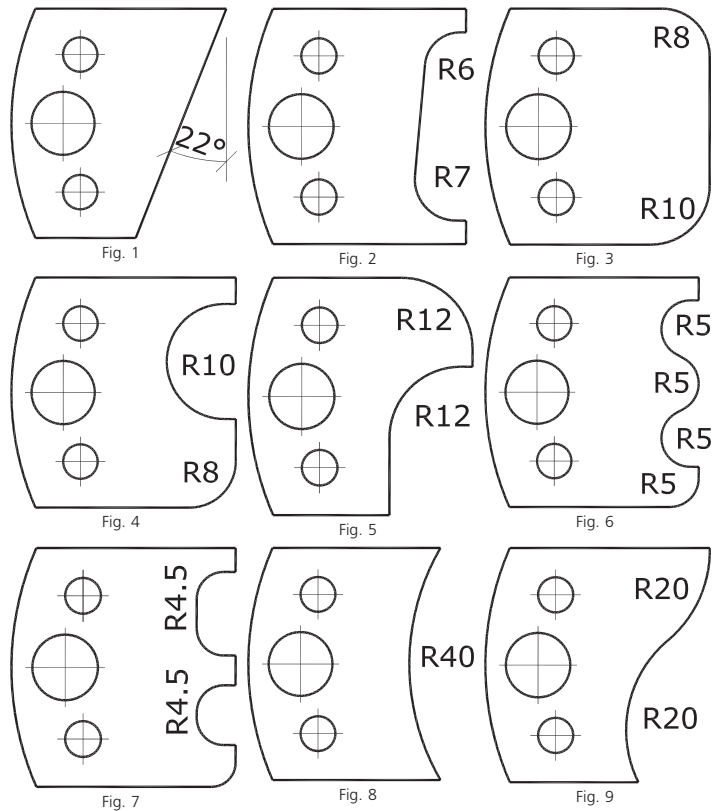
Profile knives

Art. Nr.	Qual.	Fig.
506201	SP	1
506202	SP	2
506203	SP	3
506204	SP	4
506205	SP	5
506206	SP	6
506207	SP	7
506208	SP	8
506209	SP	9
506210	SP	10
506211	SP	11
506212	SP	12
506213	SP	13
506214	SP	14
506215	SP	15
506216	SP	16
506217	SP	17
506218	SP	18
506219	SP	19
506220	SP	20
506221	SP	21
506222	SP	22
506223	SP	23
506224	SP	24
506225	SP	25
506226	SP	26
506227	SP	27
506228	SP	28
506229	SP	29
506230	SP	30
506231	SP	31
506232	SP	32
506233	SP	33
506234	SP	34
506235	SP	35
506236	SP	36

Chip-limitors

Art. Nr.	Fig.
506201A	1
506202A	2
506203A	3
506204A	4
506205A	5
506206A	6
506207A	7
506208A	8
506209A	9
506210A	10
506211A	11
506212A	12

Art. Nr.	Fig.
506213A	13
506214A	14
506215A	15
506216A	16
506217A	17
506218A	18
506219A	19
506220A	20
506221A	21
506222A	22
506223A	23
506224A	24
506225A	25
506226A	26
506227A	27
506228A	28
506229A	29
506230A	30
506231A	31
506232A	32
506233A	33
506234A	34
506235A	35
506236A	36



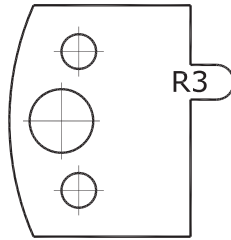


Fig. 10

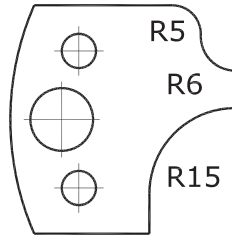


Fig. 11

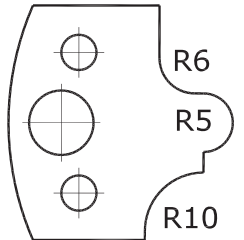


Fig. 12

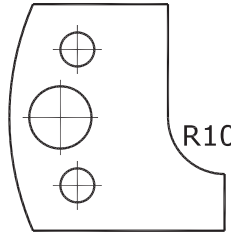


Fig. 13

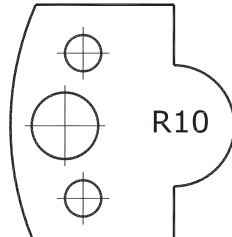


Fig. 14

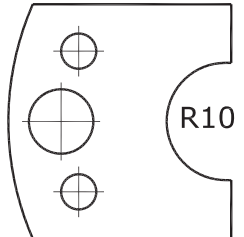


Fig. 15

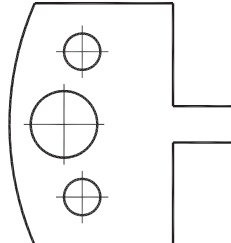


Fig. 16

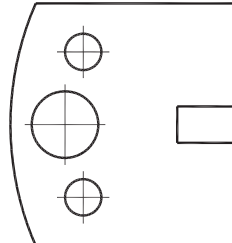


Fig. 17

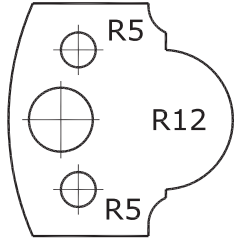


Fig. 18

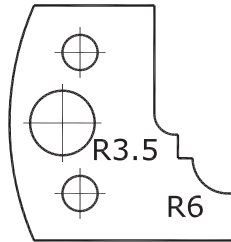


Fig. 19

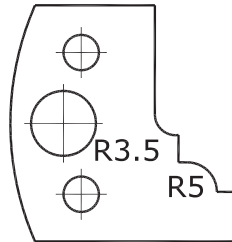


Fig. 20

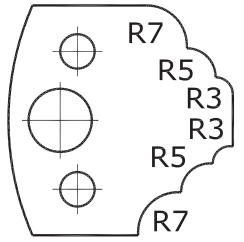


Fig. 21

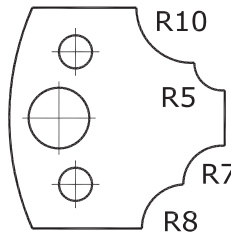


Fig. 22

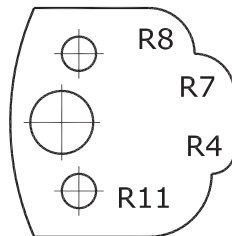


Fig. 23

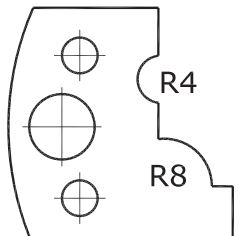


Fig. 24

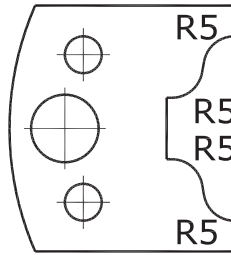


Fig. 25

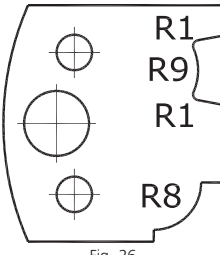


Fig. 26

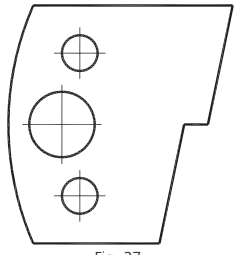


Fig. 27

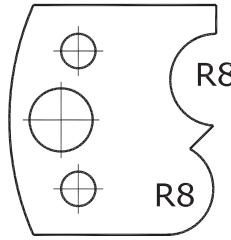


Fig. 28

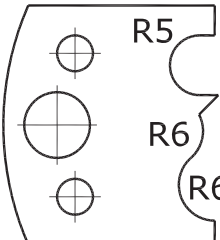


Fig. 29

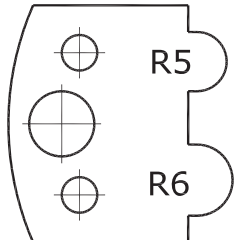


Fig. 30

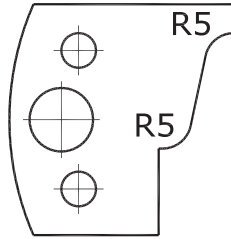


Fig. 31

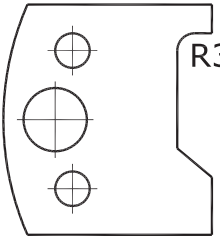


Fig. 32

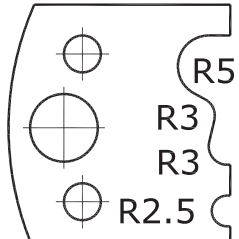


Fig. 33

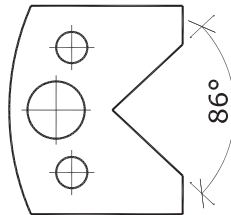


Fig. 34

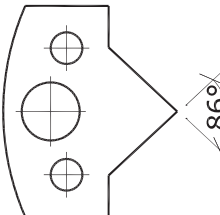


Fig. 35

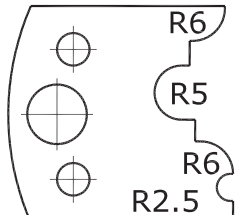


Fig. 36