

2

GROOVING, REBATING, JOINTING, GLUING



Grooving

40



Rebating

47



Jointing

51



Gluing

55



Jointing

60



Fig. 1

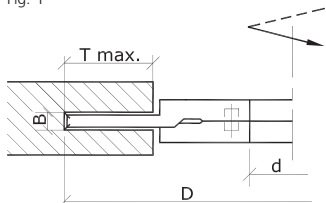


Fig. 2

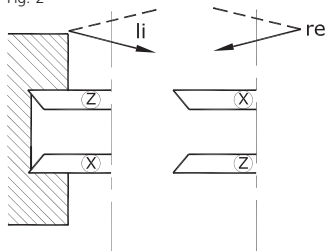


Fig. 3



Fig. 4

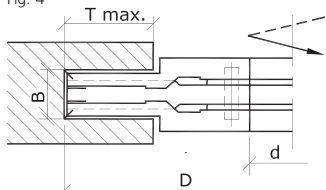


Fig. 5

Grooving cutter, multiple parts, with reversible knives

Application: For grooving in solid wood along- and across grain, chip- and fibre boards raw, laminated or veneered • Spindle moulding machines

Design: Tungsten carbide reversible knives • Grooving width adjustable with spacers (1 set included) • Cutter secured against twisting through pins • Tool body in steel • MAN (manual feed)

2-parts

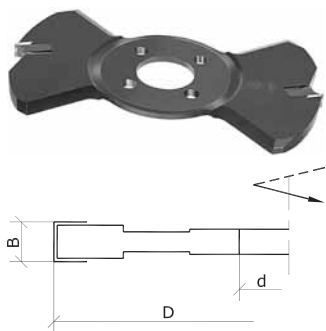
Art. Nr.	D	B	d	T max.	Z	n	Fig.	Index
41241	160	4-7	30	34	4 (2+2)	4'800-8'300	1, 2, 3	1
41244	160	4-7	40	34	4 (2+2)	4'800-8'300	1, 2, 3	2
41252	160	4-7	50	34	4 (2+2)	4'800-8'300	1, 2, 3	3
41242	160	6-11.5	30	34	8 (2+4+2)	4'800-8'300	1, 2, 3	4
41261	160	6-11.5	40	34	8 (2+4+2)	4'800-8'300	1, 2, 3	5
41262	160	6-11.5	50	34	8 (2+4+2)	4'800-8'300	1, 2, 3	6
41243	190	8-15	30	50	12 (3+6+3)	4'100-7'000	1, 2, 3	7

3-parts

Art. Nr.	D	B	d	T max.	Z	n	Fig.	Index
41246	160	4-14.5	30	34	6 (2+2+2)	4'800-8'300	3, 4, 5	8
41249	160	4-14.5	40	34	6 (2+2+2)	4'800-8'300	3, 4, 5	9
41253	160	4-14.5	50	34	6 (2+2+2)	4'800-8'300	3, 4, 5	10
41247	160	6-23	30	34	10 (2+2+2+2+2)	4'800-8'300	3, 4, 5	11
41263	160	6-23	40	34	10 (2+2+2+2+2)	4'800-8'300	3, 4, 5	12
41264	160	6-23	50	34	10 (2+2+2+2+2)	4'800-8'300	3, 4, 5	13
41248	190	8-30	30	50	15 (3+3+3+3+3)	4'100-7'000	3, 4, 5	14

Spare parts

Art.Nr.		Index
216009	Reversible knives OERTLI, Format, B=14.0 h=14.0 a=2.0 Qual=HW	4-7, 11-14
216026	Reversible knives OERTLI, Format, B=7.5 h=10.0 a=2.0 Qual=HW	7-10, 14
216086	Reversible knives OERTLI, Format, B=5.7 h=14.9 a=3.2 Qual=HW	4-6, 11-13
216564	Reversible knives OERTLI, Format, B=3.8 h=14.9 Typ=Z Qual=HW	1-3, 8-10
216566	Reversible knives OERTLI, Format, B=3.8 h=14.9 Typ=X Qual=HW	1-3, 8-10
217010	Reversible knives OERTLI, straight, B=10 h=8 a=1.5 Qual=HW	11-13
217015	Reversible knives OERTLI, straight, B=15 h=8 a=1.5 Qual=HW	14
851179	Eccentric cam, D=14 B=2.6 SW=4	1-13
950322	Gib, L=6.8	7-10, 14
950800	Gib, L=10	11-13
950804	Gib, L=13	14
851031	Screws, M=4 D=7 L=10 Typ=Torx	15
851038	Screws, M=5 D=8 L=6.3 Typ=Torx	20
851059	Screws, M=5 D=6.8 L=23 Typ=Torx	20



Expansion cutters for grooving cutter with reversible knives

Application: For grooving in solid wood along- and across grain, chip- and fibre boards raw, laminated or veneered • Spindle moulding machines

Design: Tungsten carbide reversible knives • Straight cut • Cutter secured against twisting through pins • Tool body in steel • MAN (manual feed)

Art. Nr.	D	B	d	T max.	Z	n	Index
41166	160	7.5	30	34	2	4'800-8'300	1
41169	160	7.5	40	34	2	4'800-8'300	2
41171	160	7.5	50	34	2	4'800-8'300	3
41150	160	11.0	30	34	2	4'800-8'300	4
41151	160	11.0	40	34	2	4'800-8'300	5
41152	160	11.0	50	34	2	4'800-8'300	6
41153	190	15.0	30	50	3	4'100-7'000	7

Spare parts

Art.Nr.	Index
216026 Reversible knives OERTLI, Format, B=7.5 h=10.0 a=2.0 Qual=HW	1-3
217010 Reversible knives OERTLI, straight, B=10 h=8 a=1.5 Qual=HW	4-6
217015 Reversible knives OERTLI, straight, B=15 h=8 a=1.5 Qual=HW	7
950322 Gib, L=6.8	1-3
950800 Gib, L=10	4-6
950804 Gib, L=13	7
851031 Screws, M=4 D=7 L=10 Typ=Torx 15	4-7
851059 Screws, M=5 D=6.8 L=23 Typ=Torx 20	1-3



Grooving cutter on threaded sleeve, 2-parts, with reversible knives

Application: For grooving in solid wood along- and across grain, chip- and fibre boards raw, laminated or veneered • Spindle moulding machines

Design: Tungsten carbide reversible knives • Grooving width adjustable by threaded bushing with graduated collar • Tool body in steel • MAN (manual feed)

Art. Nr.	D	B	d	T max.	Z	n	Index
41233	160	4-7	30	34	4 (2+2)	4'800-8'300	1
41234	160	4-7	30	34	8 (2+4+2)	4'800-8'300	2

Spare parts

Art.Nr.	Index
216027 Reversible knives OERTLI, Format, B=3.7 h=14.9 a=3.2 Qual=HW	2
216028 Reversible knives OERTLI, Format, B=3.7 h=13.0 a=3.2 Typ=X Qual=HW	2
216029 Reversible knives OERTLI, Format, B=3.7 h=13.0 a=3.2 Typ=Z Qual=HW	2
216564 Reversible knives OERTLI, Format, B=3.8 h=14.9 Typ=Z Qual=HW	1
216566 Reversible knives OERTLI, Format, B=3.8 h=14.9 Typ=X Qual=HW	1
851179 Eccentric cam, D=14 B=2.6 SW=4	1, 2

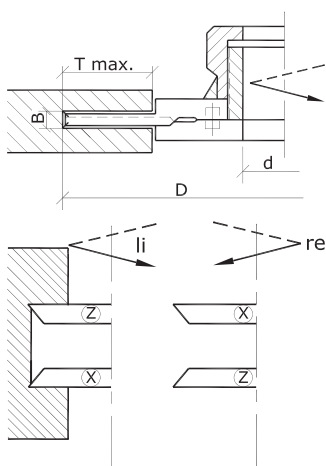




Fig. 1

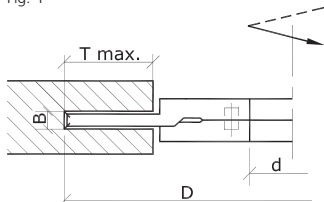


Fig. 2

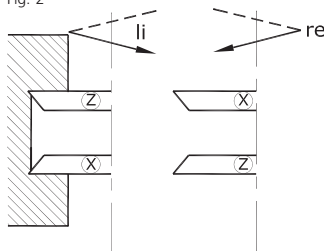


Fig. 3



Fig. 4

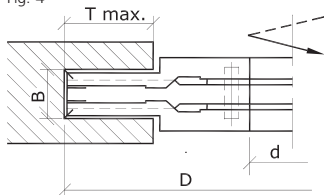


Fig. 5

High performance grooving cutter, multiple parts, with reversible knives

Application: For grooving in solid wood along- and across grain, chip- and fibre boards raw, laminated or veneered • Spindle moulding machines

Design: Tungsten carbide reversible knives • Spur- and raker knives separately arranged • Grooving width adjustable with spacers (1 set included) • Cutter secured against twisting through pins • Tool body in steel • MAN (manual feed)

2-parts

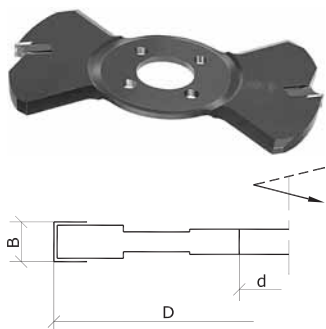
Art. Nr.	D	B	d	T max.	Z	n	Fig.	Index
41121	160	4-7	30	34	8 (2+4+2)	4'800-8'300	1, 2, 3	1
41127	160	4-7	40	34	8 (2+4+2)	4'800-8'300	1, 2, 3	2
41128	160	4-7	50	34	8 (2+4+2)	4'800-8'300	1, 2, 3	3

3-parts

Art. Nr.	D	B	d	T max.	Z	n	Fig.	Index
41124	160	4-14.5	30	34	10 (2+2+2+2+2)	4'800-8'300	3, 4, 5	4
41125	160	4-14.5	40	34	10 (2+2+2+2+2)	4'800-8'300	3, 4, 5	5
41126	160	4-14.5	50	34	10 (2+2+2+2+2)	4'800-8'300	3, 4, 5	6

Spare parts

Art.Nr.		Index
216026	Reversible knives OERTLI, Format, B=7.5 h=10.0 a=2.0 Qual=HW	4-6
216027	Reversible knives OERTLI, Format, B=3.7 h=14.9 a=3.2 Qual=HW	1-6
216028	Reversible knives OERTLI, Format, B=3.7 h=13.0 a=3.2 Typ=X Qual=HW	1-6
216029	Reversible knives OERTLI, Format, B=3.7 h=13.0 a=3.2 Typ=Z Qual=HW	1-6
851179	Eccentric cam, D=14 B=2.6 SW=4	1-6
950322	Gib, L=6.8	4-6
851059	Screws, M=5 D=6.8 L=23 Typ=Torx 20	4-6



Expansion cutters for grooving cutter with reversible knives

Application: For grooving in solid wood along- and across grain, chip- and fibre boards raw, laminated or veneered • Spindle moulding machines

Design: Tungsten carbide reversible knives • Straight cut • Cutter secured against twisting through pins • Tool body in steel • MAN (manual feed)

Art. Nr.	D	B	d	T max.	Z	n	Index
41166	160	7.5	30	34	2	4'800-8'300	1
41169	160	7.5	40	34	2	4'800-8'300	2
41171	160	7.5	50	34	2	4'800-8'300	3

Spare parts

Art.Nr.		Index
216026	Reversible knives OERTLI, Format, B=7.5 h=10.0 a=2.0 Qual=HW	1-3
950322	Gib, L=6.8	1-3
851059	Screws, M=5 D=6.8 L=23 Typ=Torx 20	1-3

Grooving cutter, 2-parts, for vertical panel saws

Application: For grooving in chip- and fibre boards, raw, laminated or veneered • Vertical panel sizing machines Striebig, made since 1983

Design: Tungsten carbide reversible knives • Spur- and raker knives separately arranged • Grooving width adjustable with spacers (1 set included) • Tool body in aluminium • MAN (manual feed)

Art. Nr.	D	B	d	T max.	Z	n
41260	250	8-15	30	45	8 (2+4+2)	3'000-6'000

Spare parts

Art.Nr.	
217705	Reversible knives, straight, B=7.5 h=12 a=1.5 Qual=HW
217765	Reversible knives, Format, B=14 h=14 a=2.0 Qual=HW
851320	Clamping nut, M=50x1.5
950110	Gib, L=6.5
851321	Set screws, M=5 L=16 Typ=ISK 2.5
851322	Screws, M=5 L=6.1 Typ=Torx 20

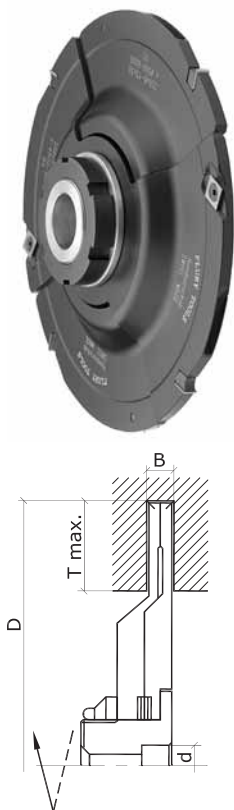




Fig. 1

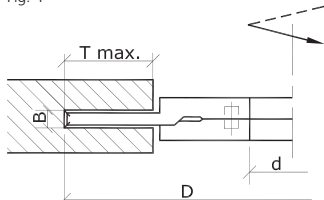


Fig. 2



Fig. 3

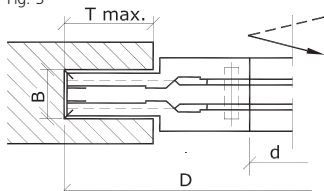


Fig. 4

Grooving cutter, multiple parts, with reversible knives, ECOLINE

Application: For grooving in solid wood along- and across grain, chip- and fibre boards raw, laminated or veneered • Spindle moulding machines

Design: Tungsten carbide reversible knives • Spur- and raker knives separately arranged • Grooving width adjustable with spacers (1 set included) • Cutter secured against twisting through pins • Tool body in steel • MAN (manual feed)

2-parts

Art. Nr.	D	B	d	T max.	Z	n	Fig.	Index
41320	160	4-7.5	30	38	12 (2+8+2)	4'800-8'300	1, 2	1
41323	160	4-7.5	40	38	12 (2+8+2)	4'800-8'300	1, 2	2
41324	160	4-7.5	50	38	12 (2+8+2)	4'800-8'300	1, 2	3
41340	160	8-15	30	38	8 (2+4+2)	4'800-8'300	1, 2	4
41344	160	8-15	40	38	8 (2+4+2)	4'800-8'300	1, 2	5
41345	160	8-15	50	38	8 (2+4+2)	4'800-8'300	1, 2	6
41341	160	12.5-24	30	38	8 (2+4+2)	4'800-8'300	1, 2	7
41346	160	12.5-24	40	38	8 (2+4+2)	4'800-8'300	1, 2	8
41347	160	12.5-24	50	38	8 (2+4+2)	4'800-8'300	1, 2	9
41343	180	8-15	30	47	8 (2+4+2)	4'400-7'400	1, 2	10
41348	180	8-15	40	47	8 (2+4+2)	4'400-7'400	1, 2	11
41349	180	8-15	50	47	8 (2+4+2)	4'400-7'400	1, 2	12

3-parts

Art. Nr.	D	B	d	T max.	Z	n	Fig.	Index
41321	160	4-15	30	38	14 (2+4+2+4+2)	4'800-8'300	3, 4	13
41328	160	4-15	40	38	14 (2+4+2+4+2)	4'800-8'300	3, 4	14
41329	160	4-15	50	38	14 (2+4+2+4+2)	4'800-8'300	3, 4	15

4-parts

Art. Nr.	D	B	d	T max.	Z	n	Fig.	Index
41322	160	4-22	30	38	16 (2+4+4+4+2)	4'800-8'300	5, 6	16
41332	160	4-22	40	38	16 (2+4+4+4+2)	4'800-8'300	5, 6	17
41333	160	4-22	50	38	16 (2+4+4+4+2)	4'800-8'300	5, 6	18

Spare parts

Art.Nr.	Index
217705	Reversible knives, straight, B=7.5 h=12 a=1.5 Qual=HW 4-6, 10-18
217706	Reversible knives, straight, B=12 h=12 a=1.5 Qual=HW 7-9
217710	Reversible knives, straight, B=15 h=12 a=1.5 Qual=HW 16-18
217764	Reversible knives, Format, B=14 h=14 a=1.2 Qual=HW 1-3, 13-18
217765	Reversible knives, Format, B=14 h=14 a=2.0 Qual=HW 4-12
217767	Reversible knives, Format, B=18 h=18 a=2.0 Qual=HW 1-3, 13-18
851345	Nut 1-3, 13-18
851346	Nut 1-3, 13-18
851027	Screws, M=5 D=9.2 L=11.5 Typ=Torx 25 7-12
851321	Set screws, M=5 L=16 Typ=ISK 2.5 4-18
851322	Screws, M=5 L=6.1 Typ=Torx 20 4-6
851344	Screws, M=4 L=3.2 Typ=Torx 9 1-3, 13-18



Fig. 5

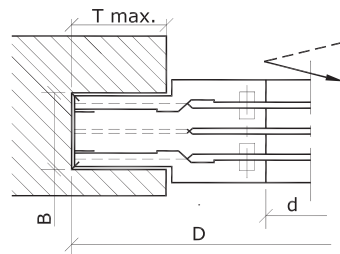


Fig. 6

Expansion cutters for grooving cutter with reversible knives, ECOLine

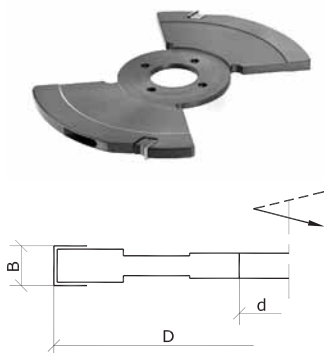
Application: For grooving in solid wood along- and across grain, chip- and fibre boards raw, laminated or veneered • Spindle moulding machines

Design: Tungsten carbide reversible knives • Straight cut • Cutter secured against twisting through pins • Tool body in steel • MAN (manual feed)

Art. Nr.	D	B	d	T max.	Z	n	Index
41330	160	7.5	30	38	2	4'800-8'300	1
41336	160	7.5	40	38	2	4'800-8'300	2
41337	160	7.5	50	38	2	4'800-8'300	3
41331	160	15.0	30	38	2	4'800-8'300	4
41338	160	15.0	40	38	2	4'800-8'300	5
41339	160	15.0	50	38	2	4'800-8'300	6

Spare parts

Art.Nr.	Index
217705 Reversible knives, straight, B=7.5 h=12 a=1.5 Qual=HW	1-3
217710 Reversible knives, straight, B=15 h=12 a=1.5 Qual=HW	4-6
851321 Set screws, M=5 L=16 Typ=ISK 2.5	1-6



Grooving cutter, 1-part, with reversible knives, ECOLine

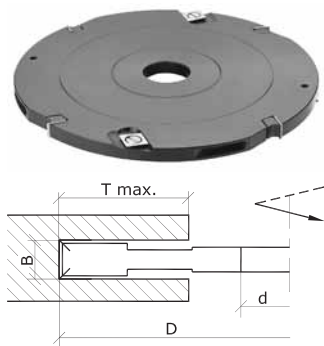
Application: For grooving in solid wood along- and across grain, chip- and fibre boards raw, laminated or veneered • Spindle moulding machines

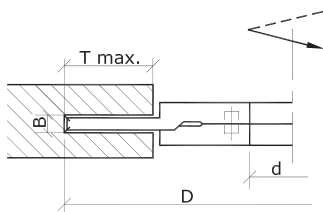
Design: Tungsten carbide reversible knives • Spur- and raker knives separately arranged • Tool body in steel • MAN (manual feed)

Art. Nr.	D	B	d	T max.	Z	n	Index
31020	125	8	30	37	8 (2+4+2)	6'200-10'500	1
31021	125	10	30	37	8 (2+4+2)	6'200-10'500	2
31022	125	12	30	37	8 (2+4+2)	6'200-10'500	3
31027	180	8	30	64	8 (2+4+2)	4'200-7'400	4
31028	180	10	30	64	8 (2+4+2)	4'200-7'400	5
31029	180	12	30	64	8 (2+4+2)	4'200-7'400	6

Spare parts

Art.Nr.	Index
217705 Reversible knives, straight, B=7.5 h=12 a=1.5 Qual=HW	1, 4
217708 Reversible knives, straight, B=9.6 h=12 a=1.5 Qual=HW	2, 5
217709 Reversible knives, straight, B=11.6 h=12 a=1.5 Qual=HW	3, 6
217765 Reversible knives, Format, B=14 h=14 a=2.0 Qual=HW	1-6
851321 Set screws, M=5 L=16 Typ=ISK 2.5	1-6
851322 Screws, M=5 L=6.1 Typ=Torx 20	1-6



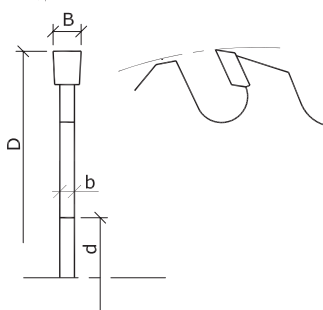
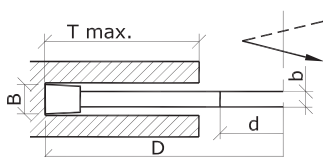


Grooving cutter, 2-parts, tungsten carbide tipped

Application: For grooving in solid wood along- and across grain, chip- and fibre boards raw, laminated or veneered • Spindle moulding machines

Design: Tungsten carbide tipped • Flat tooth, positive hook angle • Grooving width adjustable with spacers (1 set included) • Cutter secured against twisting through pins • Tool body in steel • MAN (manual feed)

Art. Nr.	D	B	d	T max.	Z	n
40010	120	1.8-3.4	30	12	12 (6+6)	6'000-12'000
40011	140	2.2-4.0	30	15	12 (6+6)	6'000-12'000
40012	150	4.0-7.5	30	35	8 (4+4)	5'100-9'000
40016	150	4.0-7.5	40	35	8 (4+4)	5'100-9'000
40013	150	7.5-14.5	30	35	8 (4+4)	5'100-9'000
40017	150	7.5-14.5	40	35	8 (4+4)	5'100-9'000

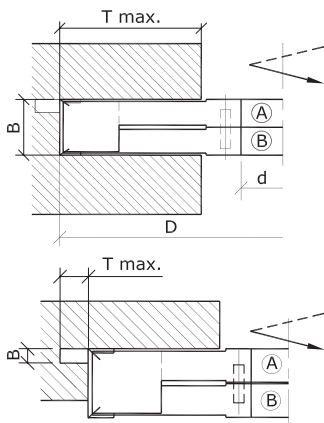
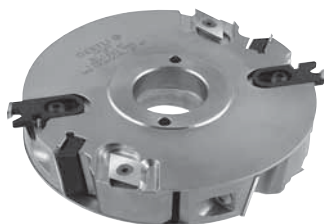


Grooving saws, tungsten carbide tipped

Application: For grooving in solid wood along grain and panel materials • Spindle moulding machines

Design: Tungsten carbide tipped • Flat tooth with chip limiter, positive hook angle • MAN (manual feed)

Art. Nr.	D	B	b	d	Z	n
753001	125	1.5	1.0	30	12	6'200-10'700
753002	125	1.8	1.2	30	12	6'200-10'700
753003	125	2.0	1.4	30	12	6'200-10'700
753004	125	2.5	1.4	30	12	6'200-10'700
753005	125	3.0	2.0	30	12	6'200-10'700
753006	125	3.5	2.5	30	12	6'200-10'700
753007	125	4.0	3.0	30	12	6'200-10'700
753008	125	4.5	3.0	30	12	6'200-10'700
753009	125	5.0	3.5	30	12	6'200-10'700
753010	125	6.0	4.0	30	12	6'200-10'700
753021	140	1.5	1.0	30	12	5'500-9'500
753023	140	2.0	1.4	30	12	5'500-9'500
753024	140	2.5	1.4	30	12	5'500-9'500
753025	140	3.0	2.0	30	12	5'500-9'500
753026	140	3.5	2.5	30	12	5'500-9'500
753027	140	4.0	3.0	30	12	5'500-9'500
753028	140	4.5	3.0	30	12	5'500-9'500
753029	140	5.0	3.5	30	12	5'500-9'500
753030	140	6.0	4.0	30	12	5'500-9'500
753031	140	8.0	6.0	30	12	5'500-9'500
753032	140	9.0	6.0	30	12	5'500-9'500
753033	140	10.0	7.0	30	12	5'500-9'500
753050	180	4.0	3.0	30	12	4'300-7'400
753051	180	5.0	3.5	30	12	4'300-7'400
753052	180	6.0	4.0	30	12	4'300-7'400
753053	180	8.0	6.0	30	12	4'300-7'400
753054	180	10.0	7.0	30	12	4'300-7'400



Grooving- and rebating cutter, 2-parts, with reversible knives

Application: For rebating and grooving in solid wood along- and across grain, chip- and fibre boards, raw, laminated or veneered • Spindle moulding machines

Design: Tungsten carbide reversible knives • Spur- and raker knives separately arranged • With planing spur knives and alternate shear cut angle • Grooving width adjustable with spacers (1 set included) • Cutter secured against twisting through pins • Basic equipment without grooving knife • Tool body in steel • MAN (manual feed)

Art. Nr.	D	B	d	T max.	Z	n	Index
45253	160	29-48	30	50	8 (2+4+2)	4'800-9'200	1
45240	160	29-48	40	45	8 (2+4+2)	4'800-9'200	2
45241	160	29-48	50	40	8 (2+4+2)	4'800-9'200	3

Spare parts

Art.Nr.	Index
216013 Reversible knives OERTLI, Format, B=16.0 h=16.0 a=3.0 Qual=HW	1-3
217025 Reversible knives OERTLI, straight, B=25 h=8 a=1.5 Qual=HW	1-3
855264 Grooving knives OERTLI, B=4.0 T max=12 Qual=HW	1-3
855368 Grooving knives OERTLI, B=5.0 T max=12 Qual=HW	1-3
855458 Grooving knives OERTLI, B=3.0 T max=12 Qual=HW	1-3
950911 Gib, L=22.2 Typ=+15°	1-3
950912 Gib, L=22.2 Typ=-15°	1-3
851032 Screws, M=5 D=8.5 L=11 Typ=Torx 20	1-3
851098 Screws, M=6 D=10.0 L=8 Typ=ISK 5	1-3
851347 Screws, M=6 D=9.5 L=20 Typ=Torx 20	1-3



Fig. 1

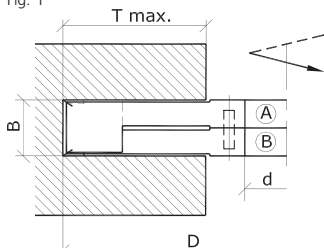


Fig. 2

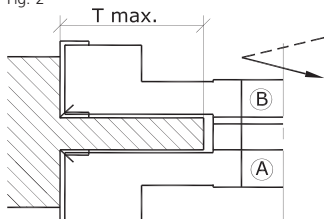


Fig. 3

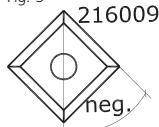


Fig. 4

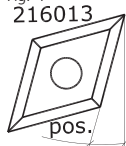


Fig. 5

Grooving- and rebating cutter, 2-parts, with reversible knives

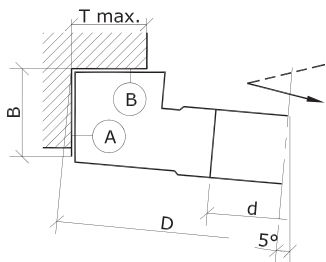
Application: For rebating and grooving in solid wood along- and across grain, chip- and fibre boards, raw, laminated or veneered • Spindle moulding machines

Design: Tungsten carbide reversible knives • Spur- and raker knives separately arranged • Raker knives with alternate shear cut angle • Grooving width adjustable with spacers (1 set included) • Cutter secured against twisting through pins • Tool body in steel • MAN (manual feed)

Art. Nr.	D	B	d	T max.	Z	n	Fig.	Index
45254	160	13-19	30	50	8 (2+4+2)	4'800-10'100	1, 2, 3, 4	1
45242	160	13-19	40	45	8 (2+4+2)	4'800-10'100	1, 2, 3, 4	2
45243	160	13-19	50	40	8 (2+4+2)	4'800-10'100	1, 2, 3, 4	3
45255	160	19-29	30	50	8 (2+4+2)	4'800-10'100	1, 2, 3, 5	4
45244	160	19-29	40	45	8 (2+4+2)	4'800-10'100	1, 2, 3, 5	5
45245	160	19-29	50	40	8 (2+4+2)	4'800-10'100	1, 2, 3, 5	6
45256	160	29-48	30	50	8 (2+4+2)	4'800-10'100	1, 2, 3, 5	7
45246	160	29-48	40	45	8 (2+4+2)	4'800-10'100	1, 2, 3, 5	8
45247	160	29-48	50	40	8 (2+4+2)	4'800-10'100	1, 2, 3, 5	9
45257	160	48-79	30	50	8 (2+4+2)	4'800-10'100	1, 2, 3, 5	10
45248	160	48-79	40	45	8 (2+4+2)	4'800-10'100	1, 2, 3, 5	11
45249	160	48-79	50	40	8 (2+4+2)	4'800-10'100	1, 2, 3, 5	12
45250	200	19-29	30	70	8 (2+4+2)	3'900-8'100	1, 2, 3, 5	13
45251	200	19-29	40	65	8 (2+4+2)	3'900-8'100	1, 2, 3, 5	14
45252	200	19-29	50	60	8 (2+4+2)	3'900-8'100	1, 2, 3, 5	15

Spare parts

Art.Nr.		Index
216009	Reversible knives OERTLI, Format, B=14.0 h=14.0 a=2.0 Qual=HW	1-3
216013	Reversible knives OERTLI, Format, B=16.0 h=16.0 a=3.0 Qual=HW	4-15
217010	Reversible knives OERTLI, straight, B=10 h=8 a=1.5 Qual=HW	1-3
217015	Reversible knives OERTLI, straight, B=15 h=8 a=1.5 Qual=HW	4-6, 13-15
217025	Reversible knives OERTLI, straight, B=25 h=8 a=1.5 Qual=HW	7-9
217040	Reversible knives OERTLI, straight, B=40 h=8 a=1.5 Qual=HW	10-12
950900	Gib, L=8 Typ=0°	1-3
950905	Gib, L=12.1 Typ=+15°	4-6, 13-15
950906	Gib, L=12.1 Typ=-15°	4-6, 13-15
950911	Gib, L=22.2 Typ=+15°	7-9
950912	Gib, L=22.2 Typ=-15°	7-9
950929	Gib, L=40 Typ=+5°	10-12
950930	Gib, L=40 Typ=-5°	10-12
851032	Screws, M=5 D=8.5 L=11 Typ=Torx 20	4-15
851038	Screws, M=5 D=8 L=6.3 Typ=Torx 20	1-3
851059	Screws, M=5 D=6.8 L=23 Typ=Torx 20	1-6, 13-15
851347	Screws, M=6 D=9.5 L=20 Typ=Torx 20	7-12



Rebating cutter 5°, 1-part, with reversible knives

Application: For perfectly clean rebates on 5° canted spindle • Spindle moulding machines

Design: Tungsten carbide reversible knives • Tool body in aluminium • MAN (manual feed)

Art. Nr.	D	B	d	T max.	Z	n	Index
22108	180	50	30	48	6 (3+3)	4'500-7'500	1
22109	180	50	40	48	6 (3+3)	4'500-7'500	2
22111	180	50	50	48	6 (3+3)	4'500-7'500	3

Spare parts

Art.Nr.		Index
217742	Reversible knives, Format, B=49.2 h=12 a=1.5 Typ=A Qual=HW	1-3
217743	Reversible knives, Format, B=49.2 h=12 a=1.5 Typ=B Qual=HW	1-3
950114	Gib, L=46 Typ=B	1-3
950115	Gib, L=46.7 Typ=A	1-3
851590	Set screws, M=6 L=16 Typ=ISK 3	1-3

Rebating cutter, 1-part, with reversible knives, ECOline

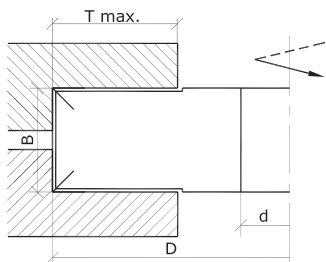
Application: For rebating and grooving in solid wood along- and across grain, chip- and fibre boards, raw, laminated or veneered • Spindle moulding machines

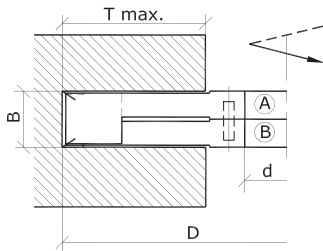
Design: Tungsten carbide reversible knives • Spur- and raker knives separately arranged • Tool body in steel • MAN (manual feed)

Art. Nr.	D	B	d	T max.	Z	n	Index
20030	125	50	30	26	8 (2+4+2)	6'000-10'300	1
20031	125	50	40	26	8 (2+4+2)	6'000-10'300	2
20032	125	50	50	26	8 (2+4+2)	6'000-10'300	3

Spare parts

Art.Nr.		Index
217725	Reversible knives, straight, B=50 h=12 a=1.5 Qual=HW	1-3
217765	Reversible knives, Format, B=14 h=14 a=2.0 Qual=HW	1-3
851322	Screws, M=5 L=6.1 Typ=Torx 20	1-3
851590	Set screws, M=6 L=16 Typ=ISK 3	1-3





Grooving- and rebating cutter, 2-parts, with reversible knives, ECOline

Application: For rebating and grooving in solid wood along- and across grain, chip- and fibre boards, raw, laminated or veneered • Spindle moulding machines

Design: Tungsten carbide reversible knives • Spur- and raker knives separately arranged • Tool body in steel • MAN (manual feed)

Art. Nr.	D	B	d	T max.	Z	n	Index
45100	160	20.6-40	30	42	8 (2+4+2)	4'800-8'000	1
45103	160	20.6-40	40	42	8 (2+4+2)	4'800-8'000	2
45104	160	20.6-40	50	42	8 (2+4+2)	4'800-8'000	3
45101	160	30.6-60	30	42	8 (2+4+2)	4'800-8'000	4
45107	160	30.6-60	40	42	8 (2+4+2)	4'800-8'000	5
45108	160	30.6-60	50	42	8 (2+4+2)	4'800-8'000	6
45102	160	50.6-100	30	42	8 (2+4+2)	4'800-8'000	7
45109	160	50.6-100	40	42	8 (2+4+2)	4'800-8'000	8
45110	160	50.6-100	50	42	8 (2+4+2)	4'800-8'000	9

Spare parts

Art.Nr.		Index
217715	Reversible knives, straight, B=20 h=12 a=1.5 Qual=HW	1-3
217720	Reversible knives, straight, B=30 h=12 a=1.5 Qual=HW	4-6
217725	Reversible knives, straight, B=50 h=12 a=1.5 Qual=HW	7-9
217765	Reversible knives, Format, B=14 h=14 a=2.0 Qual=HW	1-9
851322	Screws, M=5 L=6.1 Typ=Torx 20	1-9
851590	Set screws, M=6 L=16 Typ=ISK 3	1-9



Spiral cutterhead with reversible knives, CASTOR-FINISH

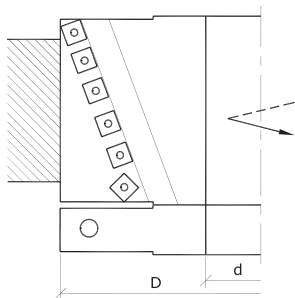
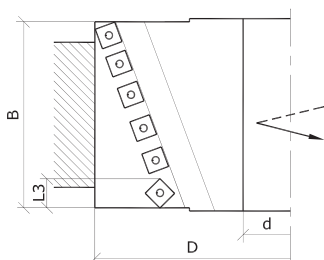
Application: For jointing of edges on solid wood along grain and on panel materials, with ball bearing collar also applicable for copy shaping work • Spindle moulding machines

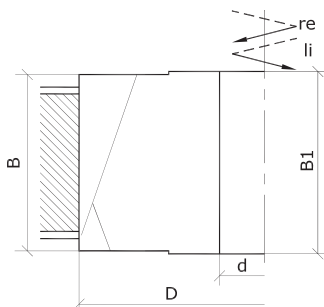
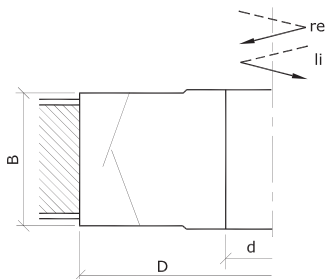
Design: Tungsten carbide reversible knives • 4 cutting edges and spirally arranged with divided cut and shear cut angle for easy chipping • For finish cut without marking of knives • Tool body in aluminium • MAN (manual feed)

Art. Nr.	D	B	L3	d	Z	n	Index
459154	80	80	12	30	4 (2+2)	9'600-18'100	1
459029	90	80	12	40	4 (2+2)	8'500-16'100	2
459155	100	100	12	50	4 (2+2)	7'700-14'500	3

Spare parts

Art.Nr.	Index
216571 Reversible knives OERTLI, Format, B=15 h=15 a=2.5 R=50 Typ=EColine Qual=HW	1-3
216672 Reversible knives OERTLI, Format, B=15 h=15 a=2.5 R=50 Typ=H8 Qual=HW	1-3
216672H6 Reversible knives OERTLI, Format, B=15 h=15 a=2.5 R=50 Typ=H6 Qual=HW	1-3
851040 Screws, M=5 D=8.5 L=15.5 Typ=Torx 20	1-3





Diamond jointing cutter

Application: For jointing in panel materials • Spindle moulding machines

Design: Diamond tipped • With alternate shear cut angle • Limited regrinding range • Tool body in steel • MAN (manual feed)

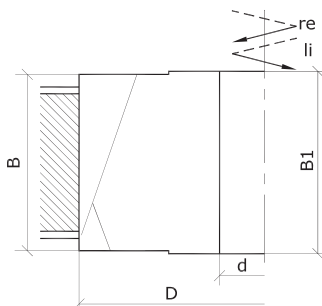
Art. Nr.	D	B	d	Z	n
455602	125	23	30+DKN	6 (3+3)	6'000-13'600
455604	125	28	30+DKN	6 (3+3)	6'000-13'600

Diamond jointing cutter

Application: For jointing in panel materials • Edge-banding machines

Design: Diamond tipped • With alternate shear cut angle • Large regrinding range • Tool body in steel • MEC (mechanical feed)

Art. Nr.	D	B	B1	d	Z	n max.
455000	85	43	45.0	30+DKN	6 (3+3) re.	18'000
455032	85	43	45.0	30+DKN	6 (3+3) li.	18'000
455004	100	34	37.6	30+DKN	6 (3+3) re.	17'100
455036	100	34	37.6	30+DKN	6 (3+3) li.	17'100
455001	100	48	25.0	30+DKN	4 (2+2) re.	17'100
455033	100	48	25.0	30+DKN	4 (2+2) li.	17'100
455005	100	48	40.6	30+DKN	6 (3+3) re.	17'100
455037	100	48	40.6	30+DKN	6 (3+3) li.	17'100
455006	100	63	25.0	30+DKN	4 (2+2) re.	17'100
455038	100	63	25.0	30+DKN	4 (2+2) li.	17'100
455002	125	25	28.6	30+DKN	4 (2+2) re.	13'600
455034	125	25	28.6	30+DKN	4 (2+2) li.	13'600
455003	125	34	37.6	30+DKN	6 (3+3) re.	13'600
455035	125	34	37.6	30+DKN	6 (3+3) li.	13'600
455007	125	63	40.6	30+DKN	6 (3+3) re.	13'600
455039	125	63	40.6	30+DKN	6 (3+3) li.	13'600

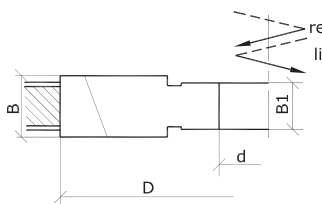


Diamond jointing cutter, ECOLINE

Application: For jointing in panel materials • Edge-banding machines

Design: Diamond tipped • With alternate shear cut angle • Limited regrinding range • Tool body in steel • MEC (mechanical feed)

Art. Nr.	D	B	B1	d	Z	n max.
455008	85	43	45.0	30+DKN	6 (3+3) re.	18'000
455040	85	43	45.0	30+DKN	6 (3+3) li.	18'000
455012	100	34	37.6	30+DKN	6 (3+3) re.	17'100
455044	100	34	37.6	30+DKN	6 (3+3) li.	17'100
455009	100	48	25.0	30+DKN	4 (2+2) re.	17'100
455041	100	48	25.0	30+DKN	4 (2+2) li.	17'100
455013	100	48	40.6	30+DKN	6 (3+3) re.	17'100
455045	100	48	40.6	30+DKN	6 (3+3) li.	17'100
455014	100	63	25.0	30+DKN	4 (2+2) re.	17'100
455046	100	63	25.0	30+DKN	4 (2+2) li.	17'100
455010	125	25	28.6	30+DKN	4 (2+2) re.	13'600
455042	125	25	28.6	30+DKN	4 (2+2) li.	13'600
455011	125	34	37.6	30+DKN	6 (3+3) re.	13'600
455043	125	34	37.6	30+DKN	6 (3+3) li.	13'600
455015	125	63	40.6	30+DKN	6 (3+3) re.	13'600
455047	125	63	40.6	30+DKN	6 (3+3) li.	13'600

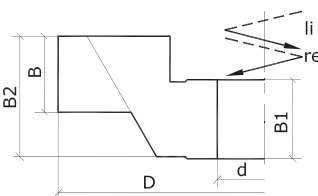


Diamond jointing cutter, ECOLINE

Application: For jointing in panel materials • Edge-banding machines

Design: Diamond tipped • With one-sided shear cut angle • Limited regrinding range • Tool body in steel • MEC (mechanical feed)

Art. Nr.	D	B	B1	d	Z	n max.
455016	70	8	10	16+DKN	4 li.	18'000
455048	70	8	10	16+DKN	4 re.	18'000
455017	70	8	10	16+DKN	6 li.	18'000
455049	70	8	10	16+DKN	6 re.	18'000
455018	70	10	10	16+DKN	4 li.	18'000
455050	70	10	10	16+DKN	4 re.	18'000
455019	70	10	10	16+DKN	6 li.	18'000
455051	70	10	10	16+DKN	6 re.	18'000
455020	70	12	10	16+DKN	4 li.	18'000
455052	70	12	10	16+DKN	4 re.	18'000

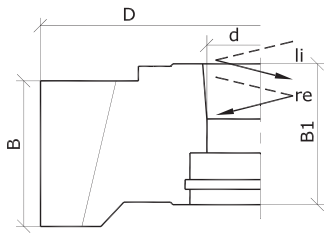


Diamond jointing cutter, ECOLINE

Application: For jointing in panel materials • Edge-banding machines

Design: Diamond tipped • With one-sided shear cut angle • Limited regrinding range • Tool body in steel • MEC (mechanical feed)

Art. Nr.	D	B	B1	B2	d	Z	n max.
455021	70	10	12	20	20+DKN	4 li.	18'000
455053	70	10	12	20	20+DKN	4 re.	18'000
455022	70	10	12	20	20+DKN	6 li.	18'000
455054	70	10	12	20	20+DKN	6 re.	18'000
455023	70	12	12	20	20+DKN	6 li.	18'000
455055	70	12	12	20	20+DKN	6 re.	18'000



Diamond jointing cutter, ECOLine

Application: For jointing in panel materials • Edge-banding machines

Design: Diamond tipped • With one-sided shear cut angle • Limited regrinding range • Tool body in steel • MEC (mechanical feed)

Art. Nr.	D	B	B1	d	Z	n max.
455024	70	8	23	HSK25R	4 li.	12'000
455056	70	8	23	HSK25R	4 re.	12'000
455025	70	8	23	HSK25R	6 li.	12'000
455057	70	8	23	HSK25R	6 re.	12'000
455026	70	8	23	HSK25R	8 li.	12'000
455058	70	8	23	HSK25R	8 re.	12'000
455027	70	10	23	HSK25R	4 li.	12'000
455059	70	10	23	HSK25R	4 re.	12'000
455028	70	12	23	HSK25R	4 li.	12'000
455060	70	12	23	HSK25R	4 re.	12'000
455029	70	15	23	HSK25R	4 li.	12'000
455061	70	15	23	HSK25R	4 re.	12'000
455030	70	25	25	HSK25R	4 li.	12'000
455062	70	25	25	HSK25R	4 re.	12'000
455031	70	25	25	HSK25R	8 li.	12'000
455063	70	25	25	HSK25R	8 re.	12'000



Fig. 1

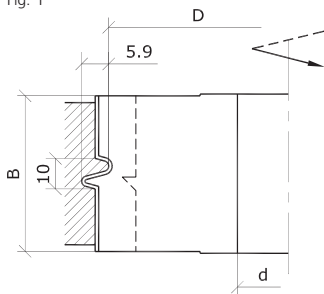


Fig. 2

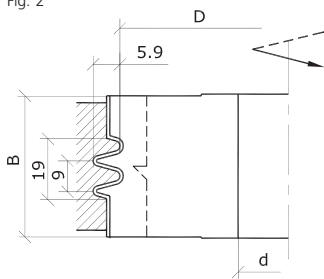


Fig. 3

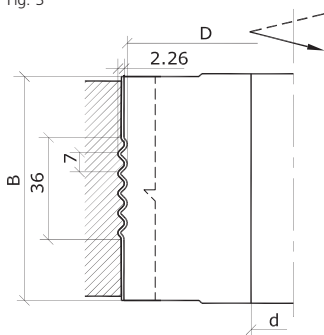


Fig. 4

Glue joint cutter with profile knives

Application: For cutting along grain of closed glue-joint profiles in solid wood • Spindle moulding machines

Design: Tungsten carbide profile knives • Profiled on one side, straight cut • Machining of both work pieces with the same cutter • Profile not self-clamping • Constant profile dimensions • Tool body in aluminium • MAN (manual feed)

Art. Nr.	D	B	d	Z	n	Fig.	Index
70180	140	45	30	2	5'500-9'500	1, 2	1
70181	140	45	40	2	5'500-9'500	1, 2	2
70182	140	45	50	2	5'500-9'500	1, 2	3
70760	140	45	30	2	5'500-9'500	1, 3	4
70761	140	45	40	2	5'500-9'500	1, 3	5
70762	140	45	50	2	5'500-9'500	1, 3	6
70746	140	80	30	2	5'500-9'500	1, 4	7
70747	140	80	40	2	5'500-9'500	1, 4	8
70748	140	80	50	2	5'500-9'500	1, 4	9

Spare parts

Art.Nr.		Index
168953	Profile knives, B=45 Qual=HW	4-6
204219	Profile knives, B=45 Qual=HW	1-3
204220	Profile knives, B=80 Qual=HW	7-9
950379	Clamping wedge	1-9
950388	Gib, L=45	1-6
950391	Gib, L=80	7-9
851341	Set screws, M=6 L=18 Typ=Torx 15	1-9

Glue joint cutter with profile knives, ECOLine

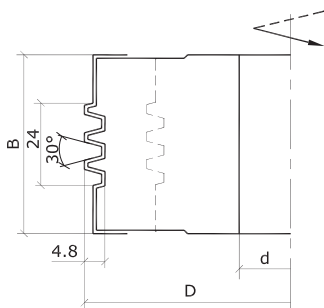
Application: For cutting along grain of closed glue-joint profiles in solid wood • Spindle moulding machines

Design: Tungsten carbide profile knives • Profiled on both sides, straight cut • Machining of both work pieces with the same cutter • Profile not self-clamping • Constant profile dimensions • Tool body in steel • MAN (manual feed)

Art. Nr.	D	B	d	Z	n
70031	130	60	30	2	5'900-9'000

Spare parts

Art.Nr.	
217723	Reversible knives, Format, B=60 h=24 a=2.0 Qual=HW
851590	Set screws, M=6 L=16 Typ=ISK 3



Glue joint cutter, tungsten carbide tipped

Application: For cutting along grain of closed glue-joint profiles in solid wood • Spindle moulding machines

Design: Tungsten carbide tipped • Profiled on one side, straight cut • Machining of both work pieces with the same cutter • Profile not self-clamping • Tool body in steel • MAN (manual feed)

Art. Nr.	D	B	d	Z	n	Fig.
70156	140	30	30	2	5'700-11'500	1
70157	140	30	40	2	5'700-11'500	1
70158	140	30	50	2	5'700-11'500	1
70159	140	45	30	2	5'800-11'500	2
70160	140	45	40	2	5'800-11'500	2
70161	140	45	50	2	5'800-11'500	2
70162	140	65	30	2	5'800-11'500	3
70163	140	65	40	2	5'800-11'500	3
70164	140	65	50	2	5'800-11'500	3
70165	140	100	30	2	5'800-11'500	4
70166	140	100	40	2	5'800-11'500	4
70167	140	100	50	2	5'800-11'500	4

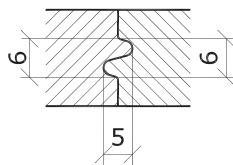
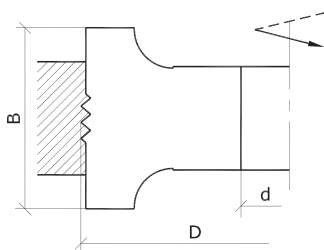


Fig. 1

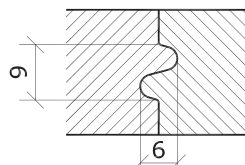


Fig. 2

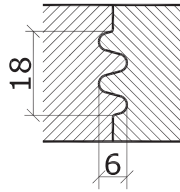


Fig. 3

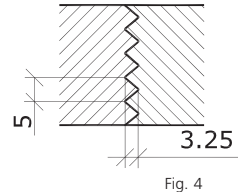


Fig. 4



Glue joint cutter with profile knives

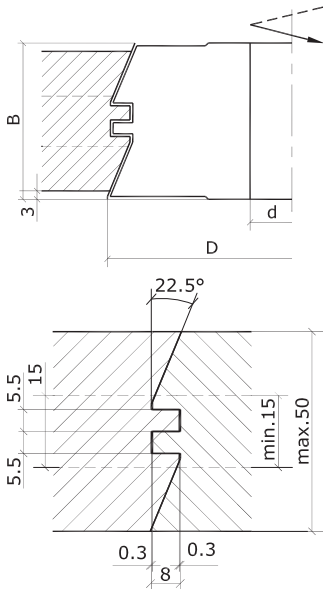
Application: For cutting along grain of closed glue-joint profiles in solid wood • Spindle moulding machines

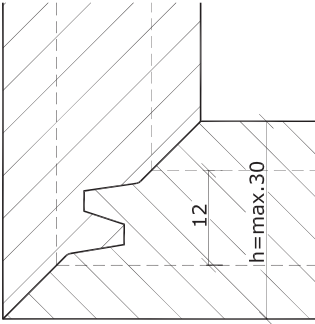
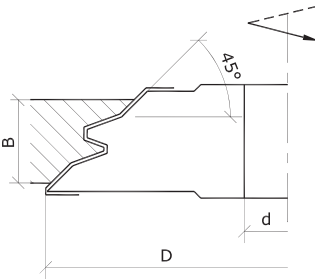
Design: Tungsten carbide profile knives • Profiled on one side, straight cut • Machining of both work pieces with the same cutter • Constant profile dimensions • Tool body in aluminium • MAN (manual feed)

Art. Nr.	D	B	d	Z	n
86110	140	55	30	2	6'000-10'300

Spare parts

Art.Nr.	Description
139073	Profile knives, B=55 Qual=HW
950379	Clamping wedge
950389	Gib, L=55
851341	Set screws, M=6 L=18 Typ=Torx 15





Mitre joint cutter 45° with profile knives

Application: For cutting of closed 45° mitre joints • Spindle moulding machines

Design: Tungsten carbide profile knives • Profiled on one side, shear cut • Machining of both work pieces with the same cutter • Profile not self-clamping • Constant profile dimensions • Tool body in aluminium • MAN (manual feed)

Art. Nr.	D	B	d	Z	n	Index
90211	170	35	30	2	6'000-8'500	1
90212	180	35	40	2	6'000-8'000	2
90213	190	35	50	2	6'000-7'600	3

Spare parts

Art.Nr.		Index
201976	Profile knives, B=45 Qual=HW	1-3
950379	Clamping wedge	1-3
950388	Gib, L=45	1-3
851341	Set screws, M=6 L=18 Typ=Torx 15	1-3

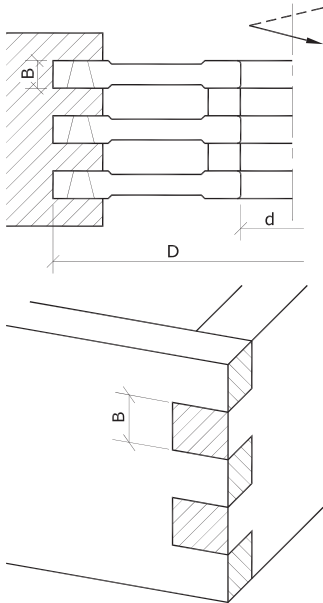


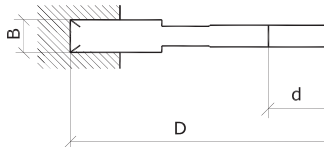
Corner locking joint cutter, tungsten carbide tipped

Application: For cutting of parallel corner locking joints in solid wood • Spindle moulding machines

Design: Tungsten carbide tipped • With alternate shear cut angle • One spacer included per cutter (for using as cutter set) • Tool body in steel • MAN (manual feed)

Art. Nr.	D	B	d	Z	n
50120	140	8	30	4 (2+2)	5'500-9'500
50122	140	10	30	4 (2+2)	5'500-9'500
50124	140	12	30	4 (2+2)	5'500-9'500





Grooving cutter with reversible knives for Lamello machines

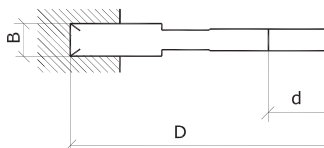
Application: For grooving of Lamello joints in solid wood along- and across grain, as well as in panel materials • Portable LAMELLO machines

Design: Tungsten carbide reversible knives • Spur- and raker knives separately arranged • Constant grooving width • Tool body in steel • MAN (manual feed)

Art. Nr.	D	B	d	NL	Z	n
176134	100	4	22	4/4.3/36	4 (2+2)	7'700-13'300

Spare parts

Art.Nr.	
176130	Reversible knife set, 4-parts, B=4.0 Qual=HW
216027	Reversible knives OERTLI, Format, B=3.7 h=14.9 a=3.2 Qual=HW
216172	Reversible knives OERTLI, Format, B=4.0 h=13.0 a=3.2 Qual=HW
851179	Eccentric cam, D=14 B=2.6 SW=4

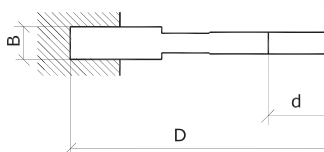


Grooving cutter, tungsten carbide tipped, for Lamello machines

Application: For grooving of Lamello joints in solid wood along- and across grain, as well as in panel materials • Portable LAMELLO machines

Design: Tungsten carbide tipped • Tool body in steel • MAN (manual feed)

Art. Nr.	D	B	d	NL	Z	n
176116	78	3	22	4/4.3/36	4 (2+2)	13'200-17'100
176133	100	4	22	4/4.3/36	6 (2+2+2)	7'700-13'300
176143	100	4	22		6 (2+2+2)	7'700-13'300



Diamond grooving cutter for Lamello machines

Application: For grooving of Lamello joints in abrasive materials • Portable LAMELLO machines

Design: Diamond tipped • With alternate shear cut angle • Limited regrinding range • Tool body in steel • MAN (manual feed)

Art. Nr.	D	B	d	NL	Z	n
176123	100	4	22	4/4.3/36	4 (2+2)	7'700-13'300

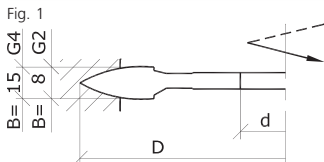


Fig. 2

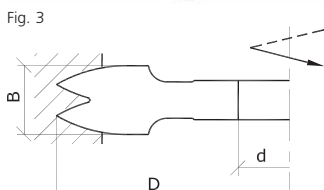


Fig. 4

Resin pocket cutter Mini-Spot, tungsten carbide tipped

Application: For cutting-out resin pockets in solid wood for various sizes of Mini-Spot inserts

Design: Tungsten carbide tipped • Tool body in steel

Art. Nr.	D	B	d	NL	Z	Typ	n	Fig.
176321	100	8.0	22	4/4.3/36	4 (2+2)	G2	7'700-13'300	1, 2
176420	100	14.5	22		4 (2+2)	G4	7'700-13'300	1, 2
176331	100	14.0	22		4 (2+2)	G22-DUO	8'000-15'000	3, 4
176333	100	21.3	22		4 (2+2)	G222-TRIO	8'000-15'000	5, 6
176353	100	8.0	22		4 (2+2)	MINI-SPOT 8	9'600-13'300	7, 8
176342	100	20.0	22		4 (2+2)	MINI-SPOT 20	9'600-13'300	9, 10
176430	100	44.0		12 (6x2)	Breitflick 44	9'600-13'300	11, 12	



Fig. 5

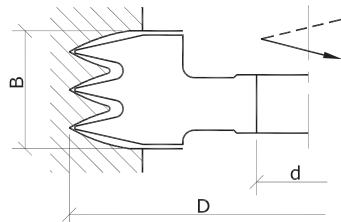


Fig. 6



Fig. 7

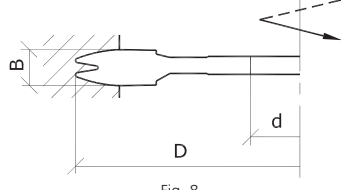


Fig. 8



Fig. 9

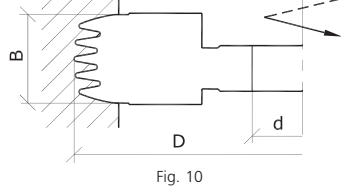


Fig. 10



Fig. 11

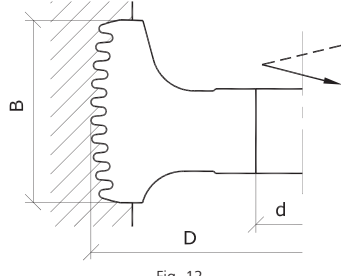


Fig. 12



Fig. 1

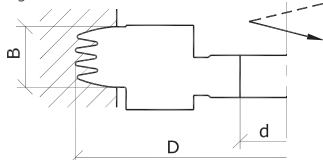


Fig. 2

Resin pocket cutter Mini-Spot, with profile knives

Application: For cutting-out resin pockets in solid wood for various sizes of Mini-Spot inserts

Design: Tungsten carbide profile knives • Profiled on one side, straight cut • Constant profile dimensions • Tool body in steel • MAN (manual feed)

Art. Nr.	D	B	d	Z	Typ	n	Fig.	Index
176347	100	15	22	2 (1+1)	MINI-SPOT 15	9'600-13'300	1, 2	1
176340	100	20	22	2 (1+1)	MINI-SPOT 20	9'600-13'300	3, 4	2

Spare parts

Art.Nr.		Index
176341	Profile knife set, 2-parts, B=20 Qual=HW	2
176348	Profile knife set, 2-parts, B=15 Qual=HW	1
950312	Gib, L=18	1, 2
851590	Set screws, M=6 L=16 Typ=ISK 3	1, 2



Fig. 3

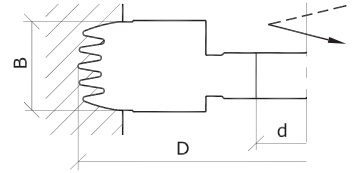


Fig. 4

